



INSTALLATION INSTRUCTIONS

Part Number KT-5201

THIS FILTER FITS: SEE CATALOG FOR CURRENT APPLICATIONS

Congratulations, you have purchased the finest air filter that money can buy. With proper care, this filter can last many seasons. This filter can be used in a stock machine, with no modifications required. If any engine modifications have been made tuning/jetting adjustments may be required. There are special installation instructions, so please follow the procedures outlined below to ensure the K&N Air Filter seals properly.

If you need any assistance please call 1-800-858-3333 to speak with a representative in our Customer Service Center before returning the product.

INSTALLATION

1. Remove the stock air filter and air filter holder. The holder will not be used with the K&N® Air Filter.
2. Slide the rubber ring down the air filter support. (Fig. 1)
3. Remove the air filter support from the air box. It will not be used with the K&N® Air Filter.
4. Carefully clean the air box intake boot where the air filter will sit.
5. Install the left side of the provided intake plate first then carefully work around the intake boot until the plate is seated completely. (Fig. 2)

NOTE: The “notch” on the intake plate will go around the hump of the intake boot. (Fig. 3)

6. Apply a small bead of the provided K&N® Sealing Grease in between the bump seals on the provided air filter plate. (Fig. 4)
7. Install the air filter plate using the eight provided buttonhead screws. (Fig. 5)
8. Install the base of the K&N® Air Filter following the contours of the air filter plate. (Fig. 6)
9. Put a thin layer of the provided K&N® Sealing Grease around the perimeter of the XStream Top.
10. Install the XStream Top into the base of the K&N® Air Filter. (Fig. 7)
11. Install the provided custom bolt assembly and tighten. (Fig. 8)

Available To Purchase Separately

Replacement Air Filter Element; E-3042

Drycharger Wrap; KT-5201DK

THESE INSTRUCTIONS MUST BE FOLLOWED EVERY TIME THE FILTER IS SERVICED, OTHERWISE THE FILTER MAY NOT SEAL, AND DAMAGE TO THE ENGINE COULD RESULT.

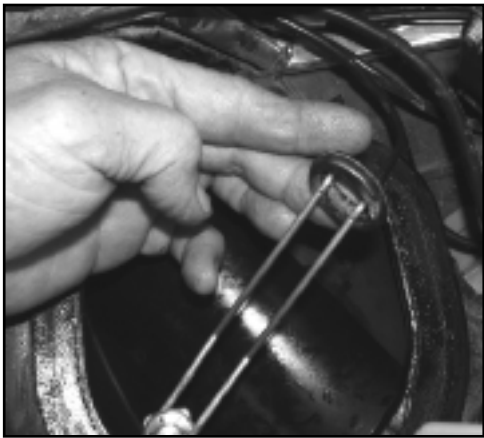


Fig. 1

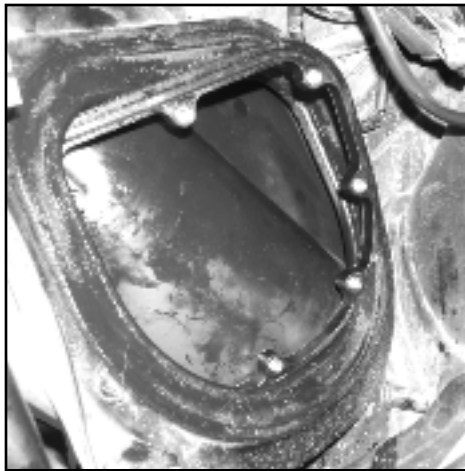


Fig. 2

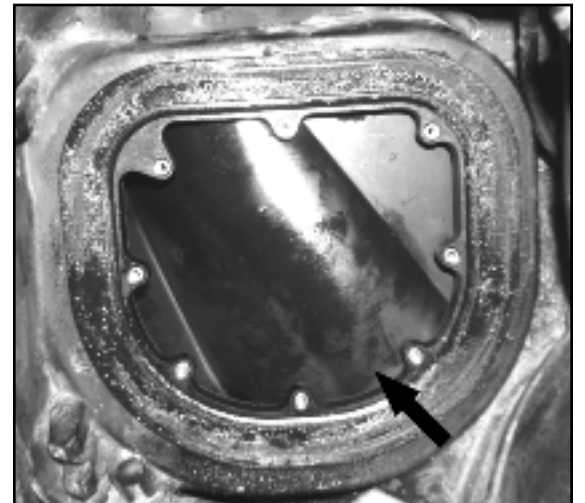


Fig. 3



Fig. 4



Fig. 5



Fig. 6



Fig. 7

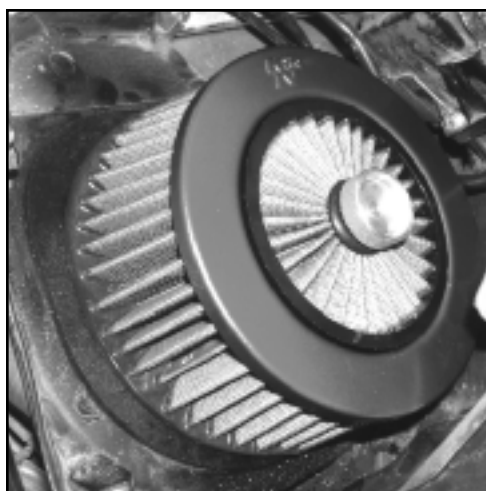


Fig. 8