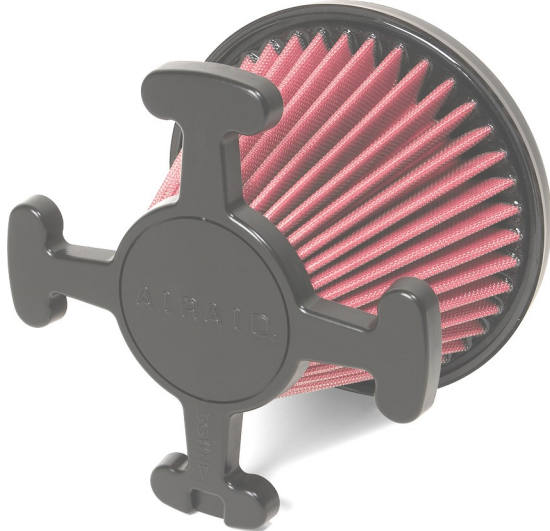




Installation Instructions

For Part Numbers:

- 860-161 Airaid Oiled Media Filter
- 861-161 SynthaMax Dry Media Filter - Red
- 862-161 SynthaMax Dry Media Filter - Black
- 863-161 SynthaMax Dry Media Filter - Blue



Airaid Direct Fit Filter

2006 GM Duramax 6.6L

“LLY” and “LBZ” Engines

Component Identification

#1 Airaid Premium Filter x1

Thank you for purchasing an Airaid Premium Filter. Contact Airaid @ (800) 498-6951 8:00 AM - 5:00 PM MST weekdays for questions regarding fit or instructions that are not clear to you. Your Airaid Premium Filter was carefully inspected and packaged. The air filter element is protected from direct exposure to water and debris, care should be taken not to drive through deep water. WATER INGESTION IS THE DRIVERS RESPONSIBILITY! The air filter is reusable and should be cleaned periodically.

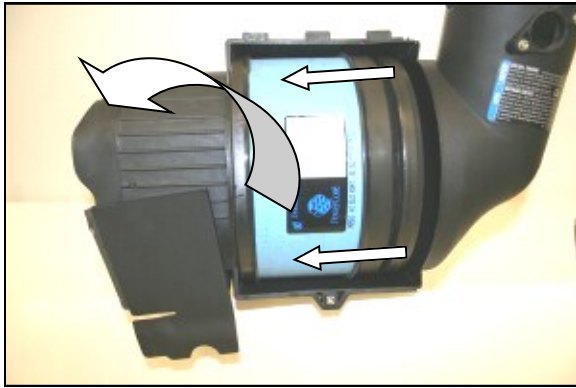
Thank you for selecting AIRAID.



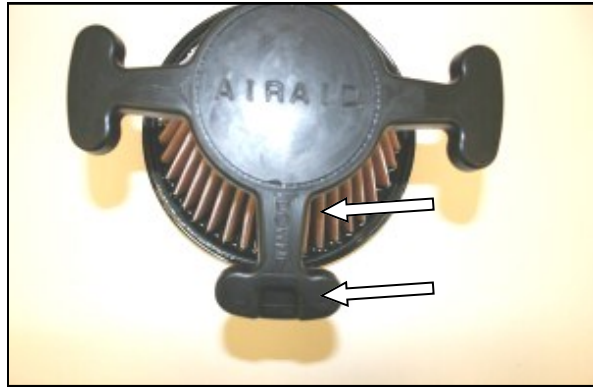
1. Loosen the screw that holds the inspection cover on the top of the factory air box.



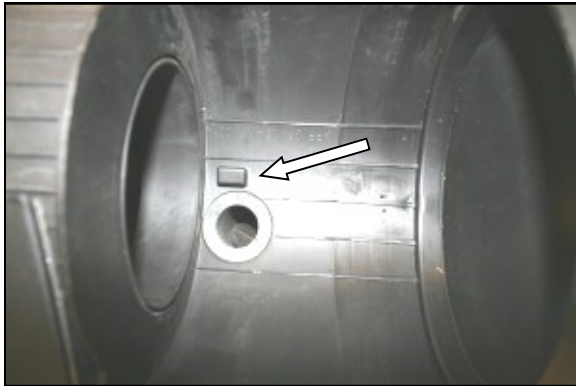
2. Remove the inspection cover to reveal the air filter.



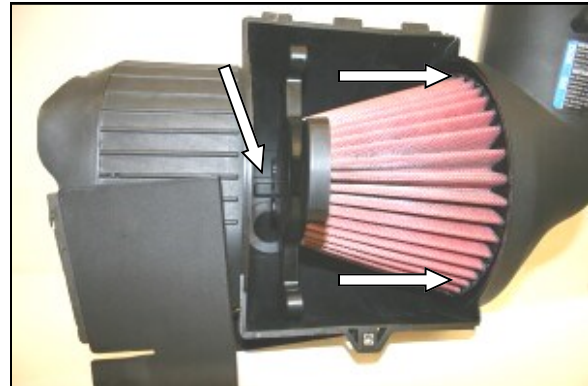
3. Slide the factory air filter away from the elbow of the airbox and remove it.



4. Locate the word "Down" on the filter and notice that there is a notch below it. It is important to locate this notch in the correct location in the bottom of the factory airbox.



5. Locate the raised rectangle in the bottom of the factory airbox. It is important to engage the notch at the bottom of the Airaid Premium Filter to ensure proper fit and a good seal.



6. Carefully align the notch on the Airaid Premium Filter with the raised rectangle at the bottom of the factory airbox, then slide the air filter towards the elbow. Make sure the air filter is seated inside the factory housing securely, and replace the factory inspection cover, and tighten the screw.

**For your Oiled media filter
we suggest using the AIRAID
Filter Tune-Up Kit!**



SynthaMax[®]

Do Not Oil

Synthamax Air Filters do not require oil. Service air filter as needed by cleaning with common non-petroleum all-purpose household cleaner and water. Simple Green[®], Formula 409[®] or equivalent works great. Apply cleaner to outside of air filter and allow to soak. Then flush filter clean from the inside out with a garden hose and repeat steps if necessary. Do not apply high pressure water or air to clean filter. Allow filter to air dry and reinstall.

AIRAID Filter Co. 2688 E Rose Garden Ln. Phoenix AZ 85050 (800) 498-6951 Airaidinfo@airaid.com www.airaid.com