



Installation Instructions

For Part Numbers:

510-355 (700-462) Airaid Oiled Media Filter

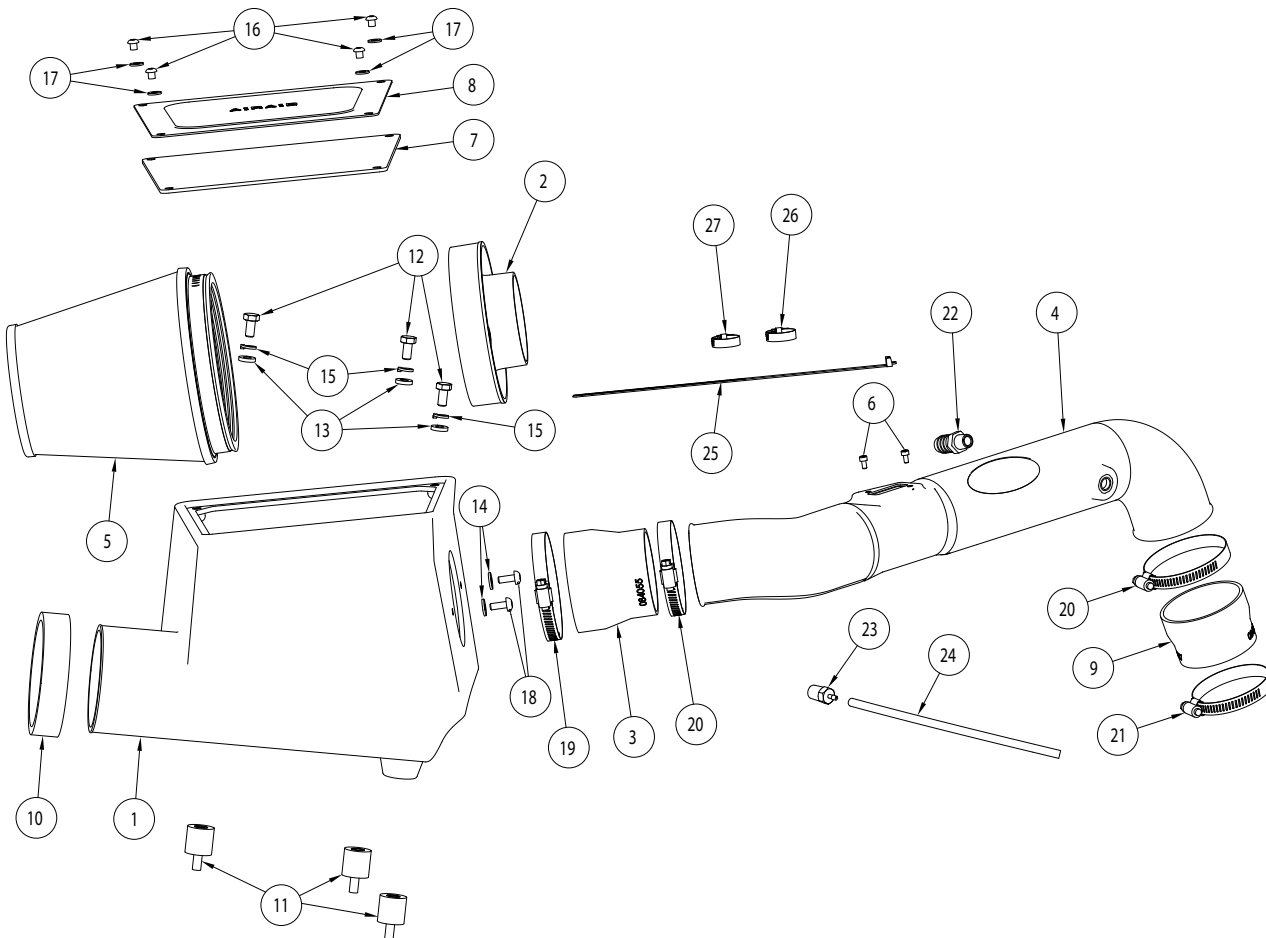
511-355 (701-462) SynthaMax Dry Media Filter - Red

2005-18 TOYOTA Tacoma

L4-2.7L

NOT LEGAL FOR SALE OR USE ON ANY POLLUTION CONTROLLED MOTOR VEHICLE IN CALIFORNIA OR STATES ADOPTING CALIFORNIA EMISSION PROCEDURES.

See Airaid.com for CARB status on each part for a specific vehicle



Component Identification

1	AIR BOX; COLD 51%-355	1	KIT355CAB
2	ADAPTER; UNIVERSAL, 6"	1	21512-1
3	HOSE; 3.5" TO 3"ID X 3"L TPRD	1	084055
4	INTAKE TUBE	1	KIT355
5	FILTER	1	700-462/701-462
6	BOLT; M4 - 0.07 8MM, A/H CAP, SS	2	07733
7	GASKET; LID 51%-301/302/312	1	KIT301G
8	LID; 51%-301/302/312	1	KIT301LID
9	HOSE; 3" TO 2.75"ID X 2"L TPRD	1	084036
10	WEATHERSTRIP; FOAM	1	KITWSTRIP06
11	MOUNT; CAB 51%-301/302/312	3	KIT301MOUNT
12	BOLT; 8MM-1.25 X 16MM	3	07844
13	WASHER; 5/16"ID X 5/8"OD, FLAT	3	08276
14	WASHER; 1/4"ID X 5/8"OD - SAE	2	08275
15	WASHER, M8 SPLIT LOCK ZINC	3	1-3036
16	BOLT; 1/4-20 X 1/4"L, SS	4	22217
17	WASHER; 6MM FLAT, SS	4	08269
18	BOLT; M6 X 1.00 X 16MM, SS	2	07730
19	HOSE CLAMP #56	1	08620
20	HOSE CLAMP #48	2	08601
21	HOSE CLAMP #40	1	08554
22	FITTING; VENT STRT 5/8 BARBED	1	08911-1
23	VENT; STRT, 1/8 HOSE, 1/4 NPT,	1	08052
24	HOSE; 5/32"ID X 9"L	1	08139
25	CABLE TIES; 11" BLACK	1	21590
26	HOSE CLAMP #10 MINI	1	08411
27	HOSE CLAMP #8 MINI	1	08410

Full color instructions can be viewed on our web site at Airaid.com. If you need any assistance please call 1-800-858-3333 to speak with a representative in our Customer Service Center before returning the product.

1. Turn off the ignition and disconnect the negative battery cable.

NOTE: Disconnecting the negative battery cable erases pre-programmed electronic memories. Write down all memory settings before disconnecting the negative battery cable. Some radios will require an anti-theft code to be entered after the battery is reconnected. The anti-theft code is typically supplied with your owner's manual. In the event your vehicles anti-theft code cannot be recovered, contact an authorized dealership to obtain your vehicles anti-theft code.



2. Disconnect the mass air sensor electrical connection and unhook the harness from the air filter housing.



3. Loosen the hose clamp that secures the intake tube to the air filter housing.



4. Remove the two bolts that secure the intake plenum to the valve cover, then remove the two bolts that secure the vacuum switching valve to the intake tube and disconnect the crank case vent hose from the valve cover.

NOTE: One of the Plenum bolts will be reused in a later step.



5. Remove the bolt securing the intake plenum to the valve cover, then disconnect the vent line from the fuel pressure regulator and loosen the hose clamp securing the intake plenum to the throttle body. Remove the intake plenum from the vehicle.



6. Release the upper air filter housing clips and remove the upper air filter housing and factory air filter.

Continued...



7. Remove the three bolts that secure the lower air filter housing to the inner fender.

NOTE: Airaid recommends that customers do not discard factory air intake.



8. Secure the vacuum switching valve to the valve cover using one of the factory plenum bolts.



9. Install the provided rubber mounted studs into the inner fender air filter housing mounting locations.



10. Install the filter adapter into the AIRAID air filter housing and secure with the provided hardware.



11. Install the foam seal around the AIRAID air filter housing inlet as shown.



12. Install AIRAID air filter housing into the vehicle and secure with the provided hardware.



13. Install the provided vent fittings and AIRAID decal onto the AIRAID intake tube as shown.

NOTE: Plastic NPT fittings are easy to cross thread. Install the vent fitting "hand" tight, then turn it two complete turns with a wrench.



14. Remove the mass air sensor from the factory air filter housing and then install it into the AIRAID intake tube and secure with the provided hardware.



15. Install the coupler hose (084036) onto the throttle body and secure with the provided hose clamp.



16. Install the coupler hose (084055) onto the filter adapter and secure with the provided hose clamp.



17. Install the AIRAID intake tube into the coupler at the filter adapter and then into the coupler at the throttle body, adjust the tube for best fit and then secure with the provided hose clamps.



18. Using the provided hose clamps, install the factory crank case vent hose onto the valve cover and vent installed into the AIRAID intake tube. Install the provided vent line onto the fuel pressure regulator and vent installed into the AIRAID intake tube.



19. Connect the mass air sensor electrical connection and secure the wiring harness with the provided tie wrap.



20. Install the AIRAID air filter onto the filter adapter and secure with the provided hose clamp.



21. Install the provided gasket onto the air filter housing lid and then install the lid onto the air filter housing and secure with the provided hardware.

Continued...



22. Double check your work!

Make sure there is no foreign material in the intake path.
Make sure all clamps, hoses, bolts, and screws are tight.
Double check the hood clearance!

Reconnect the negative battery cable!

Thank you for purchasing the Airaid Intake System. Contact Airaid @ (800) 498-6951 8:00 AM - 5:00 PM MST weekdays for questions regarding fit or instructions that are not clear to you. Your Airaid Intake System was carefully inspected and packaged. Check that no parts are missing, or were damaged during shipping. If any parts are missing, contact Airaid. The air filter element is protected from direct exposure to water and debris; care should be taken not to drive through deep water.

WATER INGESTION IS THE DRIVERS RESPONSIBILITY! The air filter is reusable and should be cleaned periodically.

FILTER IDENTIFICATION

700-462 Airaid Oiled Media

701-462 Airaid SynthaMax Dry Media - Red

For your Oiled media filter we offer the
Airaid Tune Up Kit!



P/N 790-551 Aerosol Spray
P/N 790-550 Squeeze Spray



**NOT LEGAL FOR SALE OR USE ON ANY POLLUTION
CONTROLLED MOTOR VEHICLE IN CALIFORNIA OR
STATES ADOPTING CALIFORNIA EMISSION PROCEDURES.**

See Airaid.com for CARB status on each part for a specific vehicle

SynthaMax

Do Not Oil

Synthamax Air Filters do not require oil. Service air filter as needed by cleaning with common non-petroleum all-purpose household cleaner and water. Simple Green®, Formula 409® or equivalent works great. Apply cleaner to outside of air filter and allow to soak. Then flush filter clean from the inside out with a garden hose and repeat steps if necessary. Do not apply high pressure water or air to clean filter. Allow filter to air dry and reinstall.