



Installation Instructions

For Part Numbers:

300-943 Modular Intake Tube
 300-743 Jr. Kit 850-343 Airaid Oiled Media Filter
 301-743 Jr. Kit 851-343 SynthaMax Dry Media Filter - Red

2004-08 Dodge Durango 5.7L V8
 2007-08 Chrysler Aspen 5.7L V8

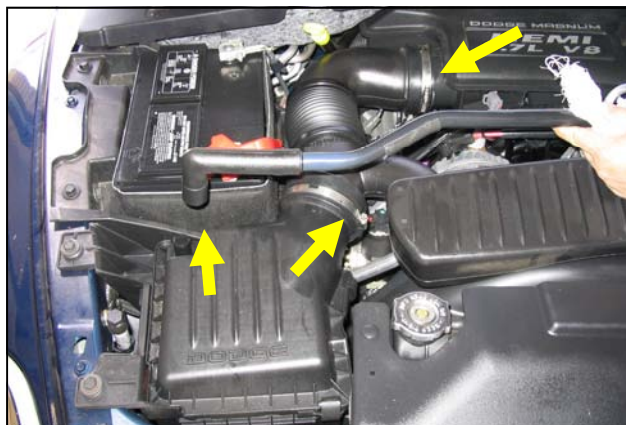


INTAKE SYSTEMS FOR VEHICLES LISTED ARE 50 STATE LEGAL. SEE AIRAID.COM FOR CARB STATUS ON EACH PART FOR A SPECIFIC VEHICLE.

Component Identification

1.	*Airaid Premium Filter	1
2.	Modular Intake Tube	1
3.	Urethane Coupler	1
4.	Urethane Hump Hose	1
5.	Rubber Grommet	1
6.	#60 Hose Clamp	4
7.	Airaid Decal	1

Full color instructions can be viewed on our web site at Airaid.com. If you need any assistance please call 1-800-858-3333 to speak with a representative in our Customer Service Center before returning the product.



1. Disconnect The Negative Battery Terminal!
 Remove valve cover breather hose from air box lid. Loosen hose clamps on both sides of factory intake tube.



2. Unsnap factory air box tube baffle from fan shroud and remove air tube assembly from vehicle.



3. Carefully disconnect electrical connector from air temperature sensor in factory housing.



4. Remove oil fill cap from valve cover. Using 10mm socket, loosen two factory housing bolts. Remove housing from engine.



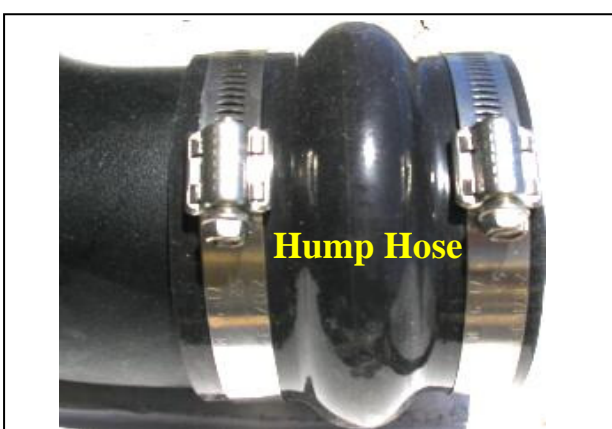
5. Remove air temperature sensor from housing by turning counter clockwise and pull.



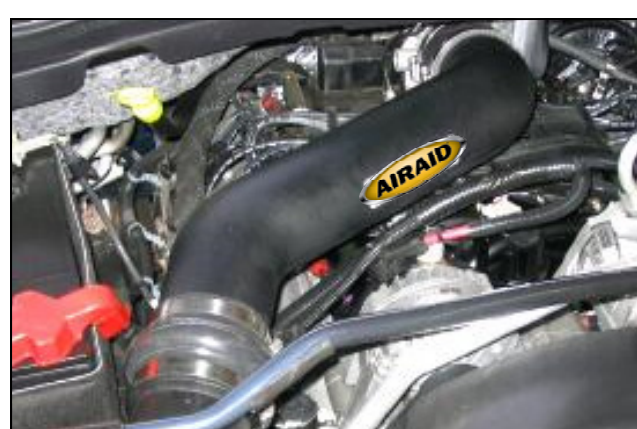
6. Remove factory orange seal from throttle body.



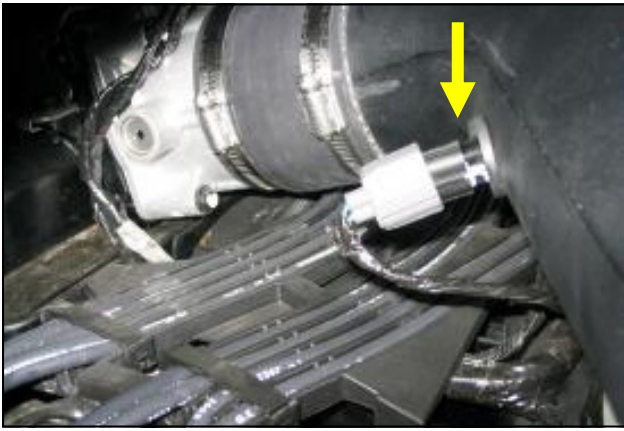
7. Install the supplied grommet and factory air temperature sensor into the Airaid MIT.



8. Install the hump hose and coupler provided onto the Airaid MIT with the supplied hose clamps. The straight coupler is positioned on the throttle body end and the hump hose is positioned on the air filter end.



9. Check for any foreign objects or debris in the intake path & install Airaid MIT assembly on engine. (*Note: Leave hose clamps loose until final assembly*) Apply the Airaid Bubble Decal onto the Intake Tube as shown.



10. Reconnect electrical connector on factory air temperature sensor.



11. Adjust hose assembly for final position and tighten all four hose clamps. Reconnect valve cover breather hose to air box lid and replace oil fill cap.

12. If you purchased the Airaid Jr. Kit, replace the factory air filter with the Airaid Premium Filter included in the Kit.

13. Double check your work to be certain that all nuts, bolts, and clamps are securely fastened.

14. Reconnect the negative battery cable.

Thank you for purchasing the Airaid Intake System. Contact Airaid @ (800) 498-6951 8:00 AM - 5:00 PM MST weekdays for questions regarding fit or instructions that are not clear to you. Your Airaid Intake System was carefully inspected and packaged. Check that no parts are missing, or were damaged during shipping. If any parts are missing, contact Airaid. The air filter element is protected from direct exposure to water and debris; care should be taken not to drive through deep water. WATER INGESTION IS THE DRIVERS RESPONSIBILITY! The air filter is reusable and should be cleaned periodically.

FILTER IDENTIFICATION

850-343 Airaid Oiled Media

851-343 Airaid SynthaMax Dry Media - Red

For your Oiled media filter we suggest using the AIRAID Filter Tune-Up Kit!



P/N 790-551 Aerosol Spray
P/N 790-550 Squeeze Spray

SynthaMax®

Do Not Oil

Synthamax Air Filters do not require oil. Service air filter as needed by cleaning with common non-petroleum all-purpose household cleaner and water. Simple Green®, Formula 409® or equivalent works great. Apply cleaner to outside of air filter and allow to soak. Then flush filter clean from the inside out with a garden hose and repeat steps if necessary. Do not apply high pressure water or air to clean filter. Allow filter to air dry and reinstall.



INTAKE SYSTEMS FOR VEHICLES LISTED ARE 50 STATE LEGAL. SEE AIRAID.COM FOR CARB STATUS ON EACH PART FOR A SPECIFIC VEHICLE.