

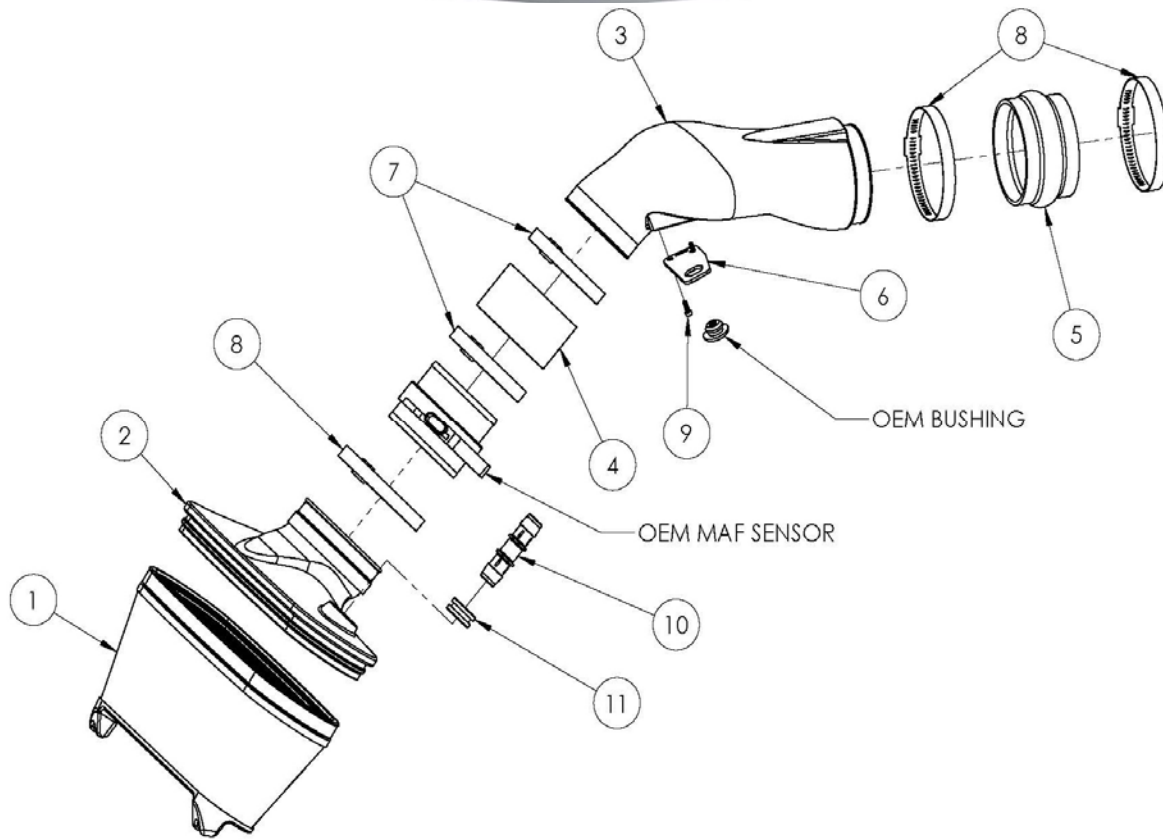


## Installation Instructions

For Part Numbers:

- 250-292 860-024F Airaid Oiled Media Filter
- 251-292 861-042F SynthaMax Dry Media Filter - Red
- 252-292 862-042F SynthaMax Dry Media Filter - Black
- 253-292 863-042F SynthaMax Dry Media Filter - Blue

2001-04 Chevrolet Corvette  
5.7L V8 All Models

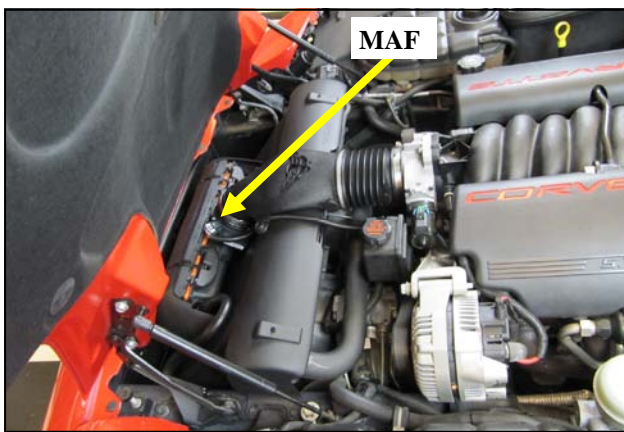


INTAKE SYSTEMS FOR VEHICLES LISTED ARE 50 STATE LEGAL. SEE AIRAID.COM FOR CARB STATUS ON EACH PART FOR A SPECIFIC VEHICLE.

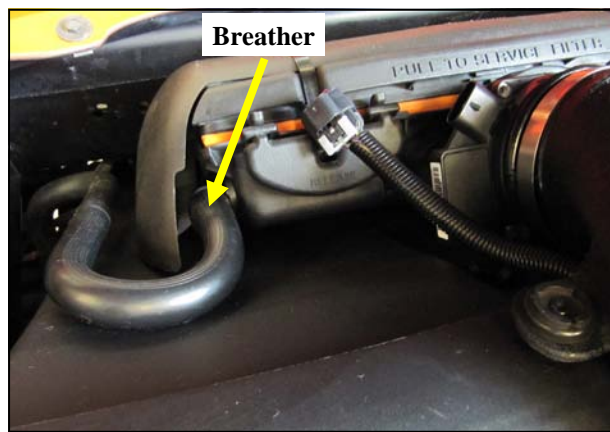
### Component Identification

1.	Airaid Premium Filter	1
2.	Filter Base	1
3.	Intake Tube	1
4.	Silicone Coupler	1
5.	Hump Hose	1
6.	Bracket	2
7.	#56 Hose Clamp	2
8.	#64 Hose Clamp	3
9.	Socket Head Cap Screw	4
10.	Straight Barbed Fitting	1
11.	Grommet	1

Full color instructions can be viewed on our web site at [Airaid.com](http://Airaid.com). If you need any assistance please call 1-800-858-3333 to speak with a representative in our Customer Service Center before returning the product.



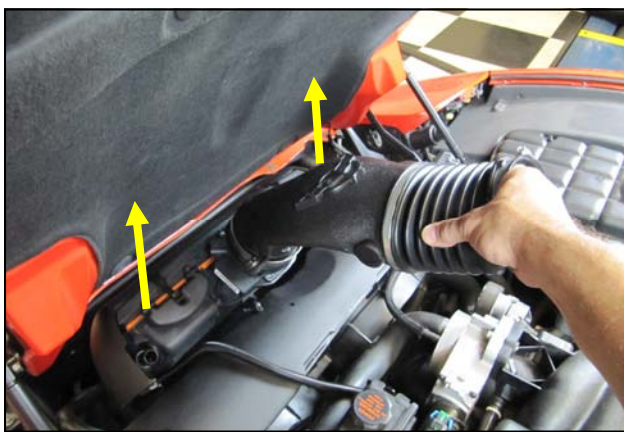
**1. Disconnect The Negative Battery Terminal!**  
Disconnect the Mass Air Flow meter, or MAF.



**2.** Disconnect the air pump breather line from the air box.



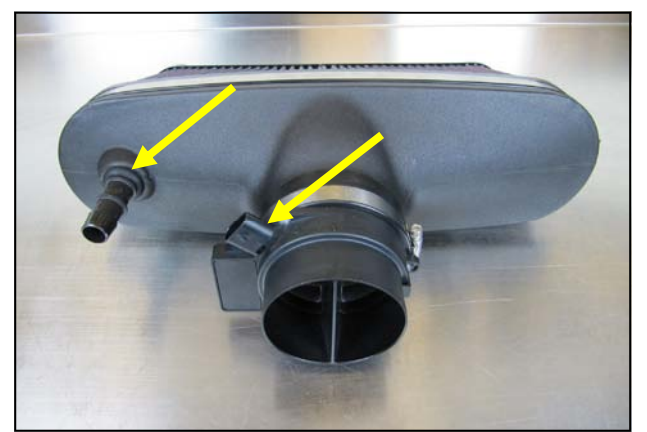
**3.** Loosen the intake tube clamp on the throttle body.



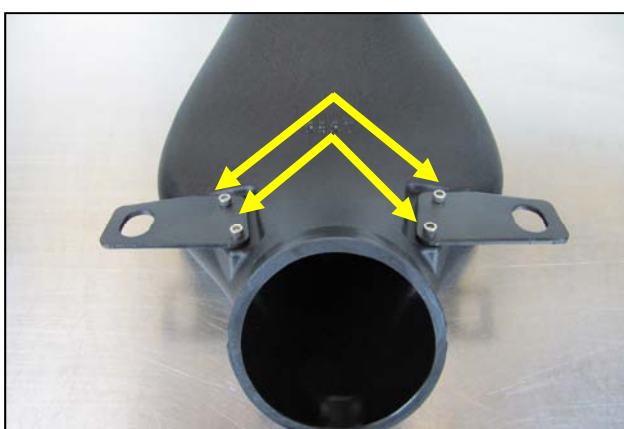
**4.** Unseat the intake tube mounting grommets from the posts on the radiator shroud and remove the entire air intake as an assembly.



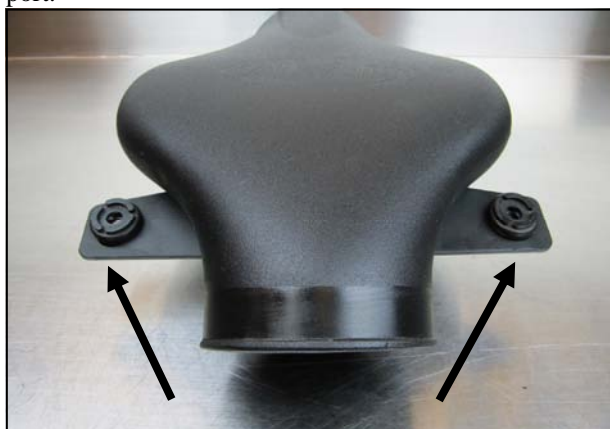
**5.** Create the Filter Assembly as shown by mounting the Filter onto the filter Base and securing it with the Large Clamp. Slide the small clamp on to the air outlet and insert the Grommet and Barbed Fitting into the breather port.



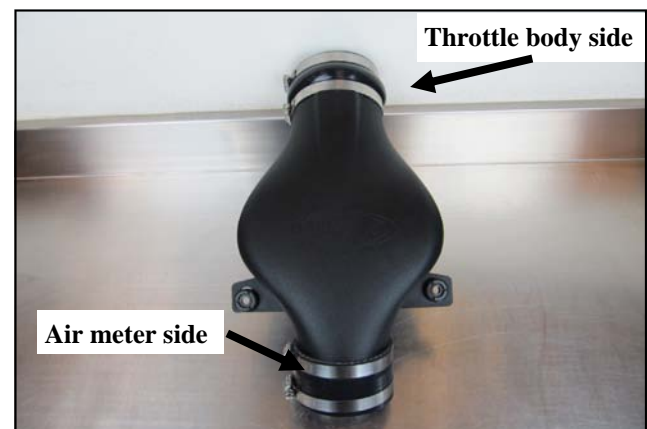
**6.** Transfer the Mass Air Flow meter into the Airaid Filter Assembly. Note the positioning of the air meter socket in relation to the breather coupling.



**7.** Install the Tube Brackets onto the Intake Tube as shown using the 8-32 Socket Head Screws (# 9)

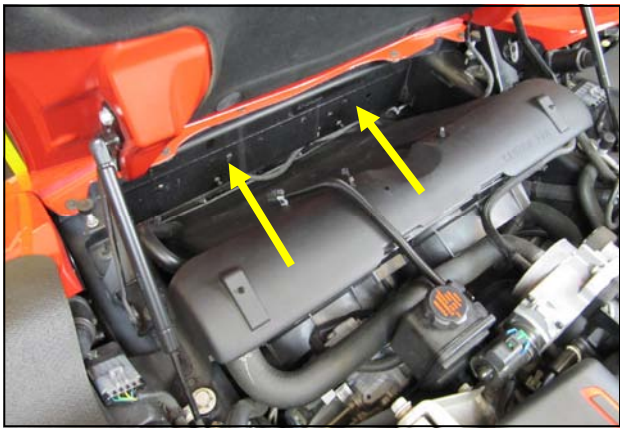


**8.** Transfer the factory intake tube mounting grommets into the Tube Brackets as shown.

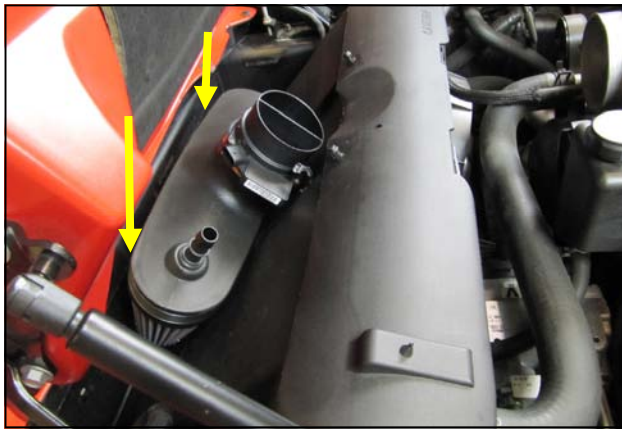


**9.** Slide the Hump Hose and #64 clamps onto the throttle body side of the Intake Tube and the Coupler and #56 Clamps onto the air meter side. Leave all clamps loose at this time.





**10.** Inspect the inner bumper area and verify that none of the air box mounting grommets were retained during disassembly.



**11.** Install the Filter Assembly in the inner bumper area. When properly installed the Filter end cap will positively engage the grommet posts on the inner frame.



**12.** Install the Airaid Tube assembly onto the throttle body and lower it downward towards the Mass Air Flow meter. Reconnect the MAF at this time.



**13.** Slide the coupler all the way down onto the MAF and secure the Intake grommets onto the posts on the radiator shroud.



**14.** Connect the air pump breather line to the coupling on the Filter assembly.



**15.** Check the alignment of all the intake components and adjust if necessary. Begin tightening the clamps from the front of the intake and move back towards the throttle body. Reconnect the battery.

Thank you for purchasing the Airaid Intake System. Contact Airaid @ (800) 498-6951 8:00 AM - 5:00 PM MST weekdays for questions regarding fit or instructions that are not clear to you. Your Airaid Intake System was carefully inspected and packaged. Check that no parts are missing, or were damaged during shipping. If any parts are missing, contact Airaid. The air filter element is protected from direct exposure to water and debris; care should be taken not to drive through deep water. WATER INGESTION IS THE DRIVERS RESPONSIBILITY! The air filter is reusable and should be cleaned periodically.

## FILTER IDENTIFICATION

860-042F Airaid Oiled Media  
862-042F Airaid SynthaMax Dry Media - Black

861-042F Airaid SynthaMax Dry Media - Red  
863-042F Airaid SynthaMax Dry Media - Blue

**For your Oiled media filter  
we suggest using the  
AIRAID Filter Tune-Up Kit!**



**P/N 790-551 Aerosol Spray  
P/N 790-550 Squeeze Spray**



*SynthaMax*

**Do Not Oil**

Synthamax Air Filters do not require oil. Service air filter as needed by cleaning with common non-petroleum all-purpose household cleaner and water. Simple Green®, Formula 409® or equivalent works great. Apply cleaner to outside of air filter and allow to soak. Then flush filter clean from the inside out with a garden hose and repeat steps if necessary. Do not apply high pressure water or air to clean filter. Allow filter to air dry and reinstall.

**INTAKE SYSTEMS FOR VEHICLES LISTED ARE 50 STATE LEGAL. SEE AIRAID.COM FOR CARB STATUS ON EACH PART FOR A SPECIFIC VEHICLE.**