

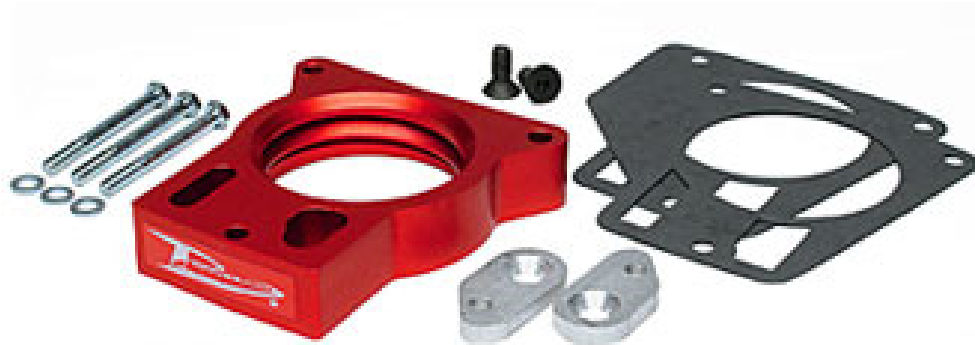


## # 200-530 INSTALLATION INSTRUCTIONS 96-00 Chevrolet/GMC C/K 7.4L

Thank you for purchasing the PowerAid Throttle Body Spacer. Please read the instruction manual carefully before proceeding with the installation. Your PowerAid Throttle Body Spacer was carefully inspected and packaged. Check that no parts are missing, or were damaged during shipping. If you need any assistance please call 1-800-858-3333 to speak with a representative in our Customer Service Center before returning the product.

*Thank you for selecting AIRAID.*

**INTAKE SYSTEMS FOR VEHICLES LISTED ARE 50 STATE  
LEGAL. SEE AIRAID.COM FOR CARB STATUS ON EACH  
PART FOR A SPECIFIC VEHICLE.**



### Parts List

AIR-KIT530PA	Aluminum Plate	(1)
AIR-KIT530G	Gasket	(2)
AIR-KIT530H	Hardware	
	6mm x 60mm Bolts	(3)
	6mm Flat Washers	(3)
	Linkage Extension Plates	(2)
	5/16-18 x 3/4" Flat Head Screws	(2)

### Tools List

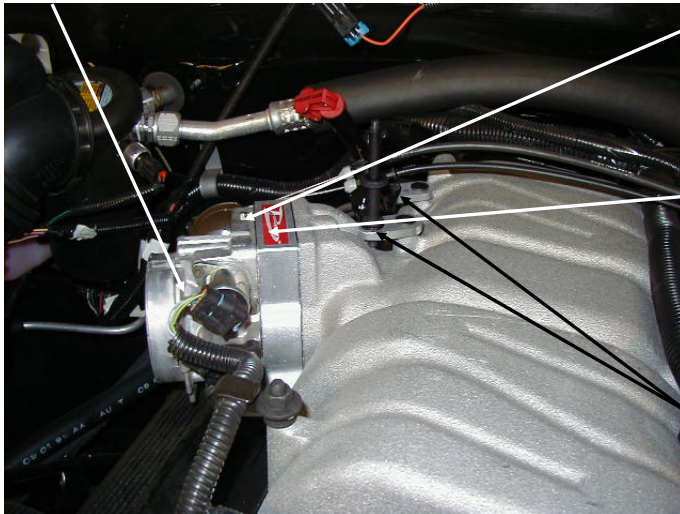
10mm Socket  
3/16 Hex Key  
Standard Screwdriver

## *Installation Instructions. Read Me!*

1. **DISCONNECT NEGATIVE (-) BATTERY CABLE.**
2. Remove air cleaner assembly.
3. Using 10mm socket remove (3) nuts and studs from front side of throttle body. (**Ref. "C"**)
4. Remove air cleaner mounting stud and bolt from throttle linkage bracket and save.
5. Install (2) linkage extension plates using (2) 5/16 x 3/4" flat head screws. (**Ref. "D"**)
6. Install air cleaner mounting stud (**Refer to Step 4**) using 5/16-18" nut and lock washer.
7. Install power plate using (2) gaskets. (**Ref. "A"**)
  - A. Place one gasket between the throttle body and the power plate
  - B. Place second gasket between the power plate and intake manifold.
8. Replace nuts and studs (**Refer to Step 3**) with (3) 6mm x 60mm bolts, and 6mm flat washers.
10. Inspect & Test the throttle linkage for full Open & Closed travel before driving. Some cruise or kickdown cables may require adjustment. Please refer to your vehicles service manual for proper adjustment.
11. Reinstall air cleaner assembly using **Step 2** as an example.
12. Reconnect battery cable. Enjoy!

*The sound of power...The "whistle" means its working!*

Ref. "B"- Throttle



Ref. "C"- (3) 6mm x 60mm Bolts

Ref. "A"- (1) Power Plate

Ref. "D"- (2) Linkage Extension Plates  
(2) 5/16-18 x 3/4" Flat Head Screws

AIR-I20530B  
Rev. 12.07.15