



## Installation Instructions

For Part Numbers:

200-180	700-451 Airaid Oiled Media Filter
201-180	701-451 SynthaMax Dry Media Filter - Red
203-180	703-451 SynthaMax Dry Media Filter - Blue

**2006-07 Hummer H3**  
**3.5L I5, 3.7L I5**

INTAKE SYSTEMS FOR VEHICLES LISTED ARE 50 STATE LEGAL. SEE AIRAID.COM FOR CARB STATUS ON EACH PART FOR A SPECIFIC VEHICLE.



### Component Identification

1.	Airaid Premium Filter	1
2.	Front Panel Coated	1
3.	Rear Panel Coated	1
4.	Weather Strip 22"	1
5.	6-32x5/16" Screw	4
6.	#6 Flat Washer	4
7.	6-32 Keps Nut	4

Full color instructions can be viewed on our web site at [Airaid.com](http://Airaid.com). Use the **Product Search** function to find your part number, and click **View Details**.

If you need any assistance please call 1-800-858-3333 to speak with a representative in our Customer Service Center before returning the product.



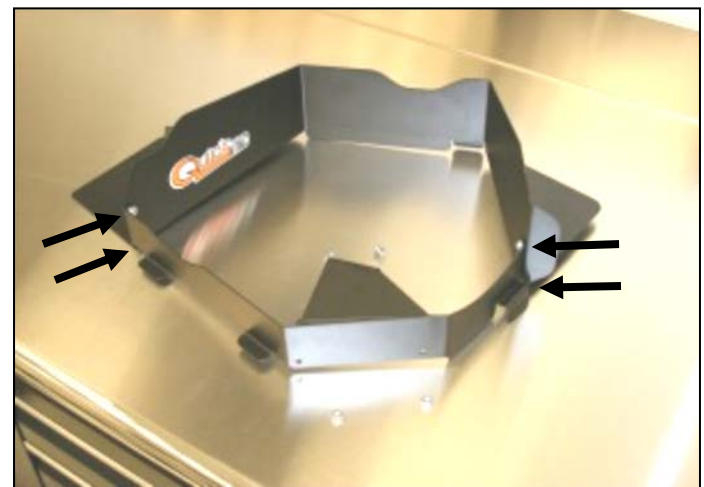
1. **Disconnect the negative battery cable.**  
 Unhook the three clips that hold down the air box lid.



2. Remove the lid by lifting, and sliding it out of the tabs on the side of the airbox.



3. Remove the factory air filter from the airbox. Do not remove the factory airbox base. The factory base is required to mount the Airaid Quick Fit Panel.



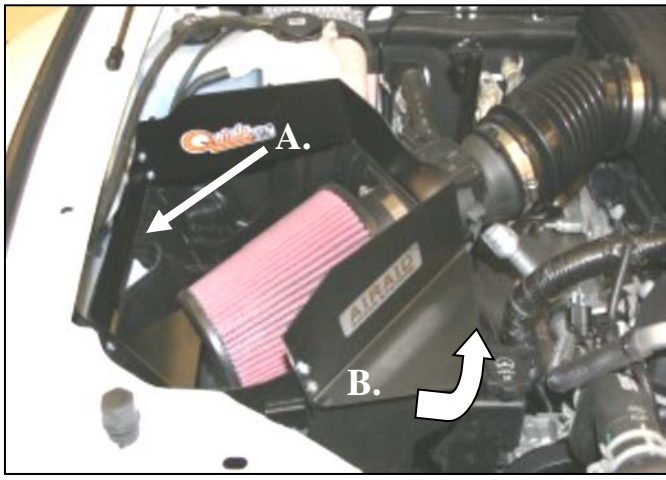
4. Assemble the Airaid Quick Fit Panels (#2, #3) using four 6-32x 5/16" screws (#5), #6 flat washers (#6), and 6-32 keps nuts (#7).



5. Install the Airaid Premium Filter (#1) on the factory intake tube.



6. Make sure the filter and the hose clamp are pushed close to the factory airbox wall, and tighten the hose clamp as shown. **Do Not over tighten.**



7. A.) There are two tabs on the Quick Fit Panel, insert the one closest to the headlight first into the slot on the factory airbox.  
 B.) Next, carefully rotate the Quick Fit Panel counter-clockwise until the factory clips line up with the tabs on the Quick Fit Panel. Make sure the filter tab retains the Airaid Premium Filter. Using the factory clips, lock down the panel.

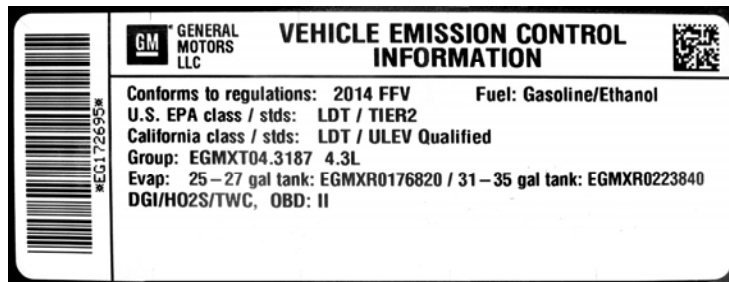


8. Starting at one end of the Quick Fit Panel, install the weather strip (#4) as shown.

**9. Double check your work!**

Make sure there is no foreign material in the intake path. Make sure all clamps, hoses, bolts, and screws are tight.

**10. Reconnect the negative battery cable!**



**WARNING!** If your vehicle has a Vehicle Emission Control Information decal affixed to the factory airbox, a new replacement label must be obtained and installed in a readily visible position in the engine compartment in order to remain CARB compliant. Failure to do so will prevent the vehicle from passing a smog check. Replacement labels can be ordered from your local dealership. Regulations state that the VECI label shall not be affixed to any equipment which is easily detached from the vehicle. Label placement, under the hood on a painted surface is recommended.

Thank you for purchasing the Airaid Intake System. Contact Airaid @ (800) 498-6951 8:00 AM - 5:00 PM MST weekdays for questions regarding fit or instructions that are not clear to you. Your Airaid Intake System was carefully inspected and packaged. Check that no parts are missing, or were damaged during shipping. If any parts are missing, contact Airaid. The air filter element is protected from direct exposure to water and debris; care should be taken not to drive through deep water. WATER INGESTION IS THE DRIVERS RESPONSIBILITY! The air filter is reusable and should be cleaned periodically.

**FILTER IDENTIFICATION**

700-451 Airaid Oiled Media  
 702-451 Airaid SynthaMax Dry Media - Black

701-451 Airaid SynthaMax Dry Media - Red  
 703-451 Airaid SynthaMax Dry Media - Blue

**For your Oiled media filter we suggest using the AIRAID Filter Tune-Up Kit!**



**Do Not Oil**



Synthamax Air Filters do not require oil. Service air filter as needed by cleaning with common non-petroleum all-purpose household cleaner and water. Simple Green®, Formula 409® or equivalent works great. Apply cleaner to outside of air filter and allow to soak. Then flush filter clean from the inside out with a garden hose and repeat steps if necessary. Do not apply high pressure water or air to clean filter. Allow filter to air dry and reinstall.

P/N 790-551 Aerosol Spray  
 P/N 790-550 Squeeze Spray

**INTAKE SYSTEMS FOR VEHICLES LISTED ARE 50 STATE LEGAL. SEE AIRAID.COM FOR CARB STATUS ON EACH PART FOR A SPECIFIC VEHICLE.**