



INSTALLATION INSTRUCTIONS

Part Number RK-3920

This filter fits: SEE CATALOG FOR CURRENT APPLICATIONS

Congratulations, you have purchased the finest air filter that money can buy. With proper care, this filter can last many seasons. This filter can be used in a stock machine, with no modifications required. If any engine modifications have been made tuning/jetting adjustments may be required. There are special installation instructions, so please follow the procedures outlined below to ensure the K&N Filtercharger® seals properly.

INSTALLATION

1. Remove the driver side seat.
2. Remove the four pull rivets from the air duct cover. (Fig. 1)
3. Remove the air duct cover. (Fig. 2)
3. Remove the pull rivet from the plastic protector and the air duct. (Fig. 3)
4. Install the provided Drycharger onto the K&N Filtercharger®.
5. Install the provided hose clamp onto the air duct. Make sure it is loose. (Fig. 4)
6. Install the K&N Filtercharger® onto the air duct with the flange angle pointing down. (Fig. 5)
Note: Install the bottom of the flange onto the air duct first. Gently press down on the top of the air duct and slip the flange over the rest of the air duct. (Fig. 6)
7. Push the K&N Filtercharger® all of the way onto the air duct.
Note: There will be minimal clearance once the K&N Filtercharger® is installed. (Fig. 7)
8. Slide the hose clamp over the flange and tighten.
Note: Do not over-tighten otherwise damage to the air duct can occur.
9. Reinstall the driver side seat.

THESE INSTRUCTIONS MUST BE FOLLOWED EVERY TIME THE FILTER IS SERVICED, OTHERWISE THE FILTER MAY NOT SEAL, AND DAMAGE TO THE ENGINE COULD RESULT.

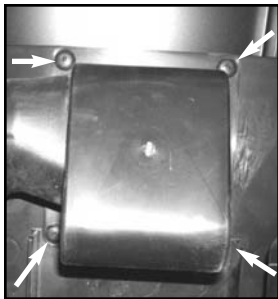


Fig. 1



Fig. 2

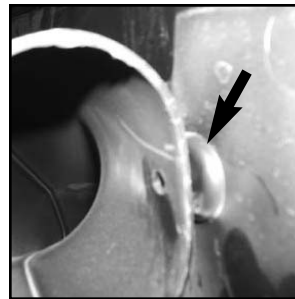


Fig. 3



Fig. 4



Fig. 5



Fig. 6

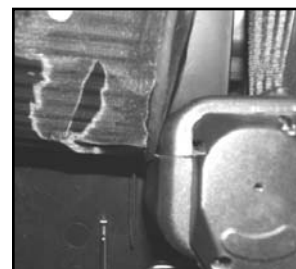


Fig. 7