



INSTALLATION INSTRUCTIONS

Part Number E-4513

This filter fits: **SEE CURRENT CATALOG FOR APPLICATIONS**

FREE K&N DECAL** To register your warranty, please see us online at knfilters.com/register. **FREE K&N DECAL

Congratulations, you have purchased the finest air filter money can buy. With proper care this air filter can last many seasons. This air filter is a direct replacement for the stock air filter and no modifications will be required. However, the following procedure **MUST** be followed to ensure a proper fit and seal of the air filter.

1. Loosen the air cleaner assembly wing nut. (Fig. 1)
2. Remove the air cleaner cover. (Fig. 2)
3. Remove the wing nut that retains the stock air filter and remove the stock air filter. (Fig. 2)
4. With a damp cloth, clean the air cleaner assembly of any dust or debris.
5. Apply the provided K&N Sealing Grease to the seal groove on the K&N Filtercharger®. (Fig. 3)
6. Install the K&N Filtercharger into the air cleaner assembly. (Fig. 4)
7. Install the provided rubber and fender washers onto the stock stud. (Fig. 5)
Note: The rubber washer will go against the K&N Filtercharger®.
8. Tighten the stock wing nut. (Fig. 6)
9. Reinstall the stock air cleaner cover and tighten the wing nut.

THESE INSTRUCTIONS MUST BE FOLLOWED EVERY TIME THE FILTER IS SERVICED, OTHERWISE THE FILTER MAY NOT SEAL, AND DAMAGE TO THE ENGINE COULD RESULT.

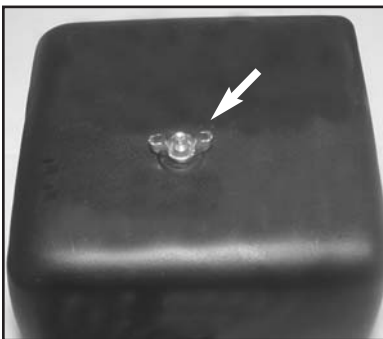


Fig. 1



Fig. 2

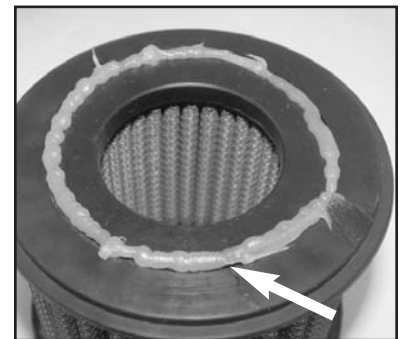


Fig. 3



Fig. 4

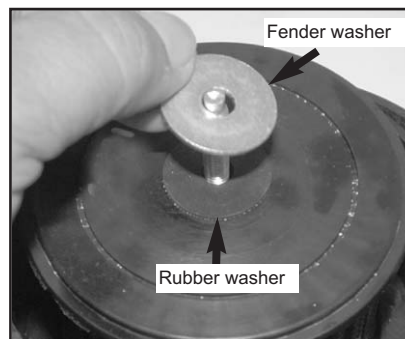


Fig. 5



Fig. 6