



Equipped with AEM® Dryflow™ Filter
No Oil Required!

INSTALLATION INSTRUCTIONS

PART NUMBER: 21-511

2003-2004 HONDA Accord L4-2.4L C.A.R.B. E.O. # D-670

Excluding LX-P models

Will not fit MAF Sensor Equipped Vehicles

E.O. # D-670 excludes 2003 MY LEV II SULEV 3HNXV02.4KCP and 2004 MY LEV II SULEV 4HNXV02.4KCV model year vehicles

*** NOTE: Legal in California only for racing vehicles which may never be used upon a highway**

PARTS LIST

Description	Qty.	Part Number
Element Parts Kit 2.50 X 5" Dry Ele.	1	21-201DK
Intake Pipe	1	2-540
Hose; 5/8"ID X 10"L	1	5-7010
Hose, Adapter 2.50/2.75 X 3" Bl.	1	5-257
Hose; 5/16ID X 25"L	1	5-2025
Mount, Rubber 1" X 6mm	1	1228599
Grommet, 13/32"	1	784639
Coupler, Oil Trap	1	8-135
Spring Clamp, Oil Trap	1	8-700
Washer, 6mm Soft Mount	2	08160
Nut, M6 Hex Serrated	2	444.460.04
1/2" Bnd. Hose Clamp, 2.31-3.25"	2	9444
1/2" Bnd. Hose Clamp, 2.15-3.00"	1	9440
Hose Clamp, 3/4"	3	4093-5
Hose Clamp, 1"	2	08407

Read and understand these instructions **BEFORE** attempting to install this product. Failure to follow installation instructions and not using the provided hardware may damage the intake tube, throttle body and engine.

The AEM® intake system is a performance product that can be used safely during mild weather conditions. During harsh and inclement weather conditions, you must return your vehicle to stock OEM air box and intake tract configuration. Failure to follow these instructions will void your warranty.

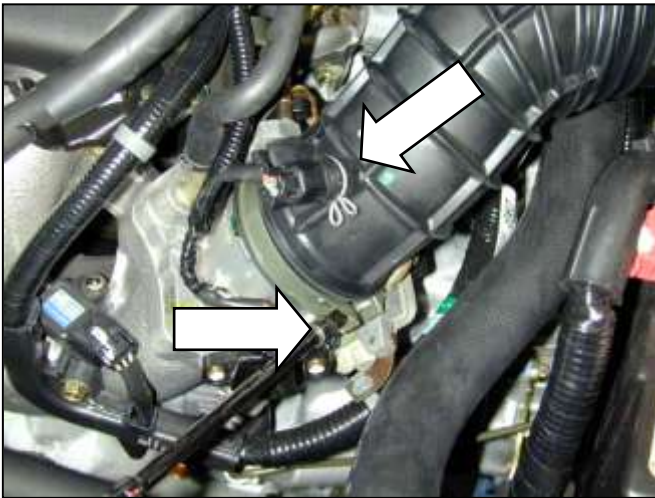
1. Preparing Vehicle

- a. Make sure vehicle is parked on level surface.
- b. Set parking brake.
- c. If engine has run in the past two hours, let it cool down.
- d. Disconnect negative battery terminal.
- e. Raise the front of the vehicle with a jack. Refer to your owner's manual for proper jack and jack stand placement to properly support vehicle. Support your vehicle using properly rated jack stands before wheel removal or while working under the vehicle.

NEVER WORK UNDER A VEHICLE WITHOUT USING JACK STANDS.

- f. Do not discard stock components after removal of the factory system.

2. Removal of stock system



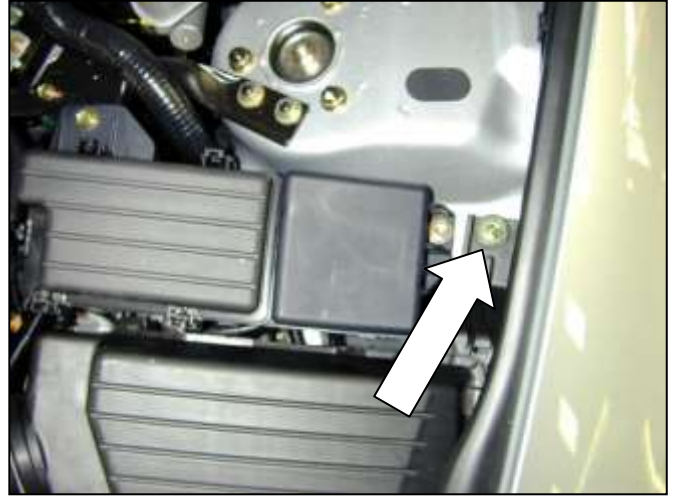
a. Loosen the clamp around the throttle body using a 5.5mm socket or screwdriver. Pull the Intake Air Temperature (IAT) sensor out of the intake tube by loosening the spring loaded clamp.



b. Unplug the breather tube from the fitting underneath the intake manifold.



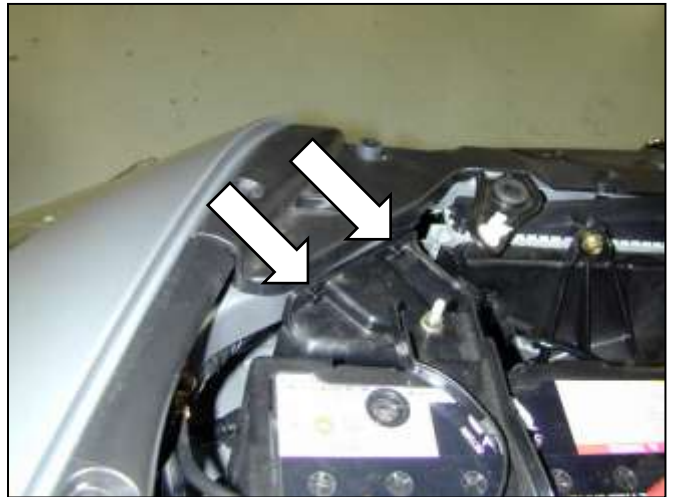
c. Remove the airbox mounting bolt shown in the picture.



d. Remove the other airbox mounting bolt shown in the picture.



e. Carefully remove the airbox assembly from the engine bay. Remove the oil trap from the inlet duct and retain the clamps for later use.



f. Remove the two fasteners securing the plastic cover in front of the battery.



g. Pull upward on the plastic cover to remove the resonator box / intake tube.



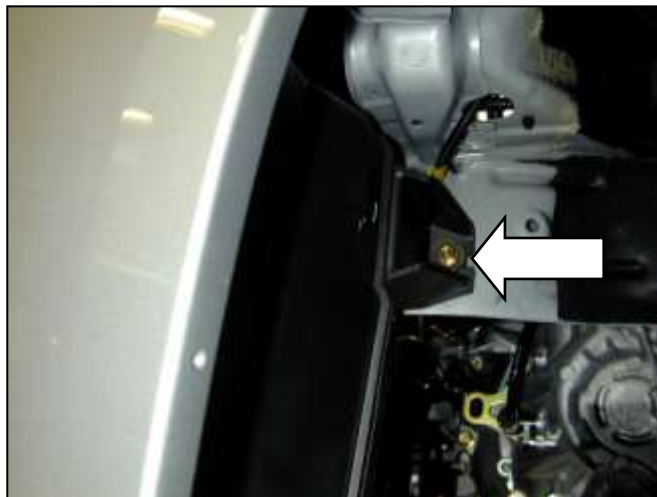
h. Remove the fasteners securing the driver-side wheel well liner.



i. From underneath the vehicle, remove the fasteners shown in the picture.



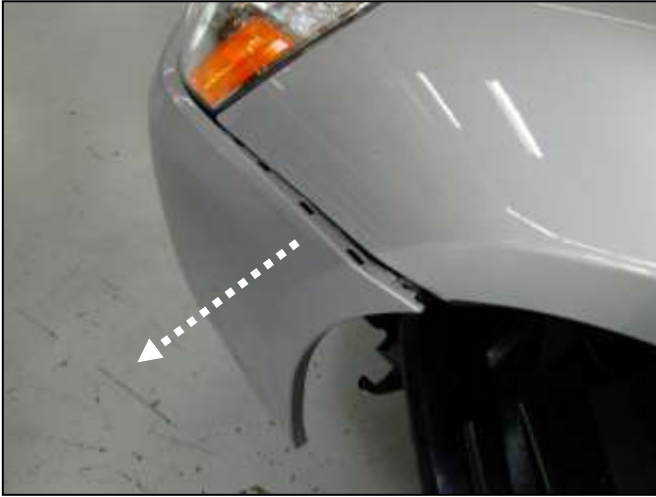
j. Tuck the fender liner out of the way behind the brake rotor.



k. Remove the resonator mounting bolt shown in the picture.



l. Remove the screw holding the corner of the front bumper cover.



m. Unsnap the corner of the bumper cover as shown in the picture. This will help in the removal of the resonator assembly.



n. Reach up inside the space in front of the resonator assembly with a 10mm socket or wrench and remove the other mounting bolt.



o. Remove the resonator assembly from the vehicle.

3. Installation of AEM® intake system.

- a. When installing the intake system, do not completely tighten the hose clamps or mounting hardware until instructed to do so.



- b. Place the coupler on to the throttle body. Install a #44 hose clamp around the throttle body and a #40 on the other end. Do not tighten the hose clamps.



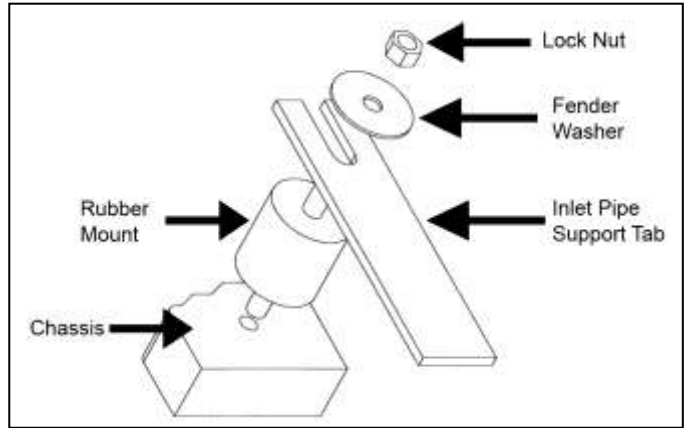
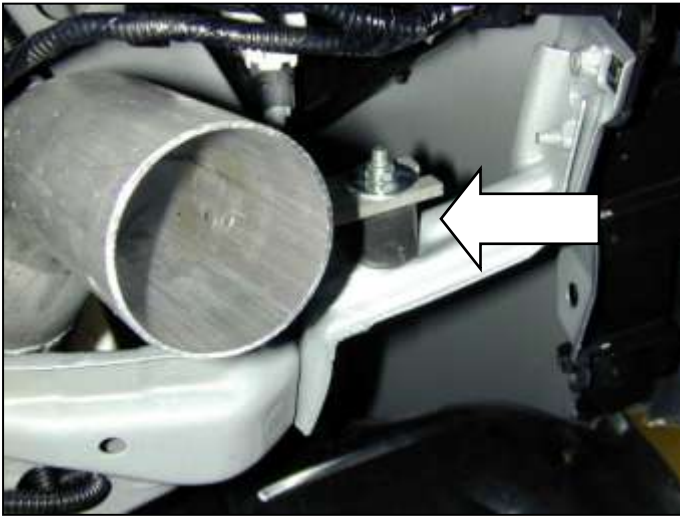
- c. Install the rubber mount in the bracket behind the front left headlight as shown in the picture. Secure it in place with a washer and Nylock nut as shown.



- d. Insert the AEM® intake pipe into the engine bay. Line up the bracket of the intake pipe with the rubber mount while also inserting the intake pipe into the coupler on the throttle body.



- e. Install the included rubber grommet into the small hole on the intake pipe. Insert the IAT sensor into the hole.



f. Install a nut and washer to secure the intake bracket to the rubber mount as shown. Ensure the rubber mount assembly is properly installed, see diagram for reference.

Proper installation of the rubber mount assembly.



g. Remove the small hose from the factory intake system.



h. Install the small hose on the AEM® intake system. Use a 3/4" hose clamp to secure it on the small nipple of the intake pipe.



i. Install the air filter on the end of the intake pipe and tighten the hose clamp.



j. Attach the oil trap coupler to the oil trap and secure with the stock clamp. Attach the small end to the intake pipe and secure with provided spring clamp. **NOTE: This intake system is designed to use the factory oil trap, failure to use the oil trap will result in poor performance and possible engine damage may result.**



AEM® intake system installed

4. Reassemble Vehicle

- a. **Bumper Cover:** Snap the bumper cover back in place and replace the fastener.
- b. **Fender Liner:** Install and secure the fender liner that was partially removed through steps 2h-2l.
NOTE: Failure to install the fender liner will result in diminished performance and increase the potential for engine damage due to water ingestion in rainy conditions.
- c. **Wheel:** Install the driver's side wheel using the factory torque specification (see owner's manual).
- d. Position the inlet pipes for the best fitment. Be sure that the pipes or any other components do not contact any part of the vehicle. Tighten the rubber mount, all bolts, and hose clamps.
- e. Check for proper hood clearance. Re-adjust pipes if necessary and re-tighten them.
- f. Inspect the engine bay for any loose tools and check that all fasteners that were moved or removed are properly tightened.
- g. Reconnect negative battery terminals and start engine. Let the vehicle idle for 3 minutes. Perform a final inspection before driving the vehicle.

5. CARB Sticker Placement

- a. The C.A.R.B. exemption sticker, (attached), must be visible under the hood so that an emissions inspector can see it when the vehicle is required to be tested for emissions. California requires testing every two years, other states may vary.

6. Service and Maintenance

- a. It is recommended that you service your AEM® Dryflow™ filter every 20,000 miles for optimum performance. Use AEM Dryflow cleaning kit part # 21-110.
- b. Use aluminum polish to clean your polished AEM® intake tube.
- c. Use window cleaner to clean your powder coated AEM® intake tube. **(NOTE: DO NOT USE aluminum polish on powder coated AEM intake tubes).**

For technical inquiries
e-mail us at
sales@aemintakes.com
or
call us at
800.992.3000

AEM Air Intake System Warranty Policy

AEM® warrants that its intake systems will last for the life of your vehicle. AEM will not honor this warranty due to mechanical damage (i.e. improper installation or fitment), damage from misuse, accidents or flying debris. AEM will not warrant its powder coating if the finish has been cleaned with a hydrocarbon-based solvent. The powder coating should only be cleaned with a mild soap and water solution. Proof of purchase of both the vehicle and AEM intake system is required for redemption of a warranty claim.

This warranty is limited to the repair or replacement of the AEM part. In no event shall this warranty exceed the original purchase price of the AEM part nor shall AEM be responsible for special, incidental or consequential damages or cost incurred due to the failure of this product. Warranty claims to AEM must be transportation prepaid and accompanied with dated proof of purchase. This warranty applies only to the original purchaser of product and is nontransferable. Improper use or installation, use for racing, accident, abuse, unauthorized repairs or alterations voids this warranty. AEM disclaims any liability for consequential damages due to breach of any written or implied warranty on all products manufactured by AEM. Warranty returns will only be accepted by AEM when accompanied by a valid Return Merchandise Authorization (RMA) number. Credit for defective products will be issued pending inspection. Product must be received by AEM within 30 days of the date RMA is issued.

If you have a warranty issue, please call (800) 992-3000 and our customer service department will assist you. A proof of purchase is required for all AEM warranty claims.