



INSTALLATION INSTRUCTIONS

77-9022

TOYOTA

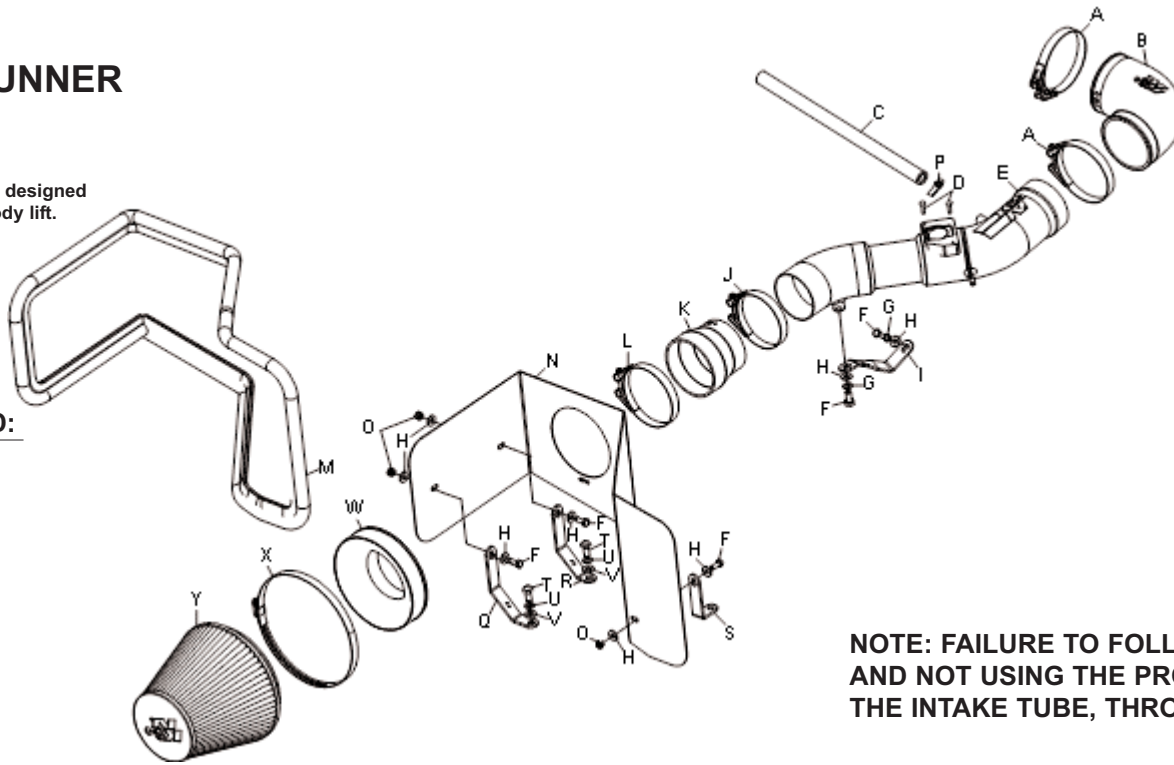
2003-04 4RUNNER

V8 4.7L

NOTE: This kit was not designed to fit vehicles with a body lift.

TOOLS NEEDED:

- Ratchet
- Extension
- 10mm Socket
- 12mm Socket
- 13mm Socket
- Phillips Screwdriver
- 2.5mm Allen
- 9/64" Allen
- 10mm Wrench
- Pliers



PARTS LIST:

Desc.	Qty.	Part#
A	2	08610
B	1	084095
C	1	08402
D	2	07793
E	1	27179KP
F	5	07703
G	2	08198
H	8	08275
I	1	07173
J	1	08601
K	1	084055
L	1	08620
M	1	102460
N	1	074005
O	3	07553
P	1	08407
Q	1	07172
R	1	07171
S	1	07158
T	2	07844
U	2	08239
V	2	08276
W	1	21512
X	1	08697
Y	1	RF-1048

NOTE: FAILURE TO FOLLOW INSTALLATION INSTRUCTIONS AND NOT USING THE PROVIDED HARDWARE MAY DAMAGE THE INTAKE TUBE, THROTTLE BODY AND ENGINE.

TO START:

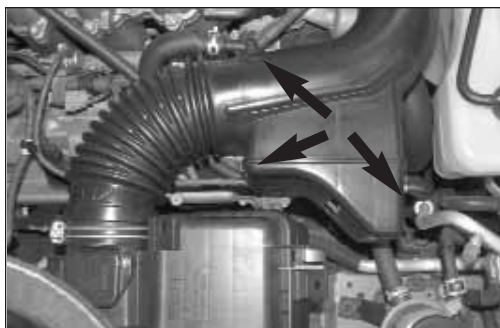
1. Turn the ignition OFF and disconnect the vehicle's negative battery cable.



2. Loosen the two nuts that secure the throttle body cover, then remove the throttle body cover



3. Disconnect the mass air sensor electrical connection, then release wire loom from air box.



4. Remove the three vent lines from the air intake resonator as shown.



5. Loosen the hose clamp at the throttle body and air box, then remove intake tube from vehicle.



6. Remove the air box lid and filter to gain access to the three bolts that retain the air box to vehicle.



7. Remove the three bolts that retain the air box to vehicle, then remove the air box.



8. Remove the 12mm bolt that retains the power steering reserve to vehicle then mount the provided bracket (07158) onto the vehicle with the bolt that was removed.



9. Mount the two provided brackets onto the vehicle with the provided hardware. NOTE: Bracket (07172) mounts closest to engine.



10. Install the edge trim onto the heat shield as shown. Trim if needed.



11. Install the heat shield onto the vehicle then secure to brackets with the provided hardware.



12. Install the tube mounting bracket onto the threaded boss on the cam cover with the provided hose clamp.

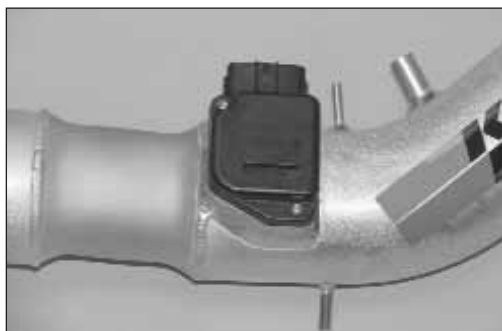


13. Install the provided silicone hose (084095) onto the throttle body with the provided hose clamp.

NOTE: The synch bolt in the #350 hose clamp at the throttle body will need to be replaced with the longer synch bolt supplied.



14. Remove the two screws that secure the mass air sensor to the air box lid, then remove the mass air sensor as shown.



15. Install the mass air sensor into the K&N intake tube and secure with the provided bolts as shown.



16. Install the K&N intake tube into the silicone hose at the throttle body and align the mounting boss with the mounting bracket installed in step #12. Secure with the provided hardware.



17. Remove the factory crank case vent hose from valve cover and then install the supplied vent hose onto the valve cover and K&N intake tube and secure with the supplied hose clamp as shown.



18. Connect the factory fuel pressure vent hose onto the K&N intake tube as shown.



19. Connect the factory power steering pressure switch vent hose onto the K&N intake tube as shown.



20. Install the filter adapter into the air filter as shown and secure with the provided hose clamp.



21. Install the provided silicone hose (084055) onto the air filter assembly as shown and secure with the provided hose clamp.



22. Install the air filter assembly onto the K&N intake as shown and secure with the provided hose clamp.



23. Disconnect the ground strap that's attached to the mass air sensor wiring harness at the inner fender as shown.



24. Using the bolt that was removed in the previous step, connect the ground strap to wheel well as shown.



25. Reconnect the mass air sensor electrical connection as shown.



26. Reinstall the throttle body cover as shown.



27. Reconnect the negative battery cable and double check to make sure everything is tightened and properly positioned before starting the vehicle.

28. It will be necessary for all intakes to be checked periodically for realignment, clearance and tightening of all connections. Failure to follow the above instructions or proper maintenance may void warranty.

ROAD TESTING:

1. Start the engine with the transmission in neutral or park, and the parking brake engaged. Listen for air leaks or odd noises. For air leaks secure hoses and connections. For odd noises, find cause and repair before proceeding. This kit will function identically to the factory system except for being louder and much more responsive.

2. Test drive the vehicle. Listen for odd noises or rattles and fix as necessary.

3. If road test is fine, you can now enjoy the added power and performance from your kit.

4. K&N suggests checking the air filter element periodically for excessive dirt build-up. When the element becomes covered in dirt (or once a year), service it according to the instructions on the Recharger service kit, part number 99-5050 or 99-5000.

STREET LEGAL IN MOST STATES

**NOT LEGAL FOR USE IN CA & OTHER STATES
ADOPTING CA EMISSIONS STANDARDS**

See our catalog or knfilters.com for CARB status on each part for a specific vehicle

FREE K&N DECAL To register your warranty, please see us online at knfilters.com/register. FREE K&N DECAL