



# INSTALLATION INSTRUCTIONS

## 77-3062

CHEVROLET / GMC / ISUZU

2006-09 TRAILBLAZER / ENVOY

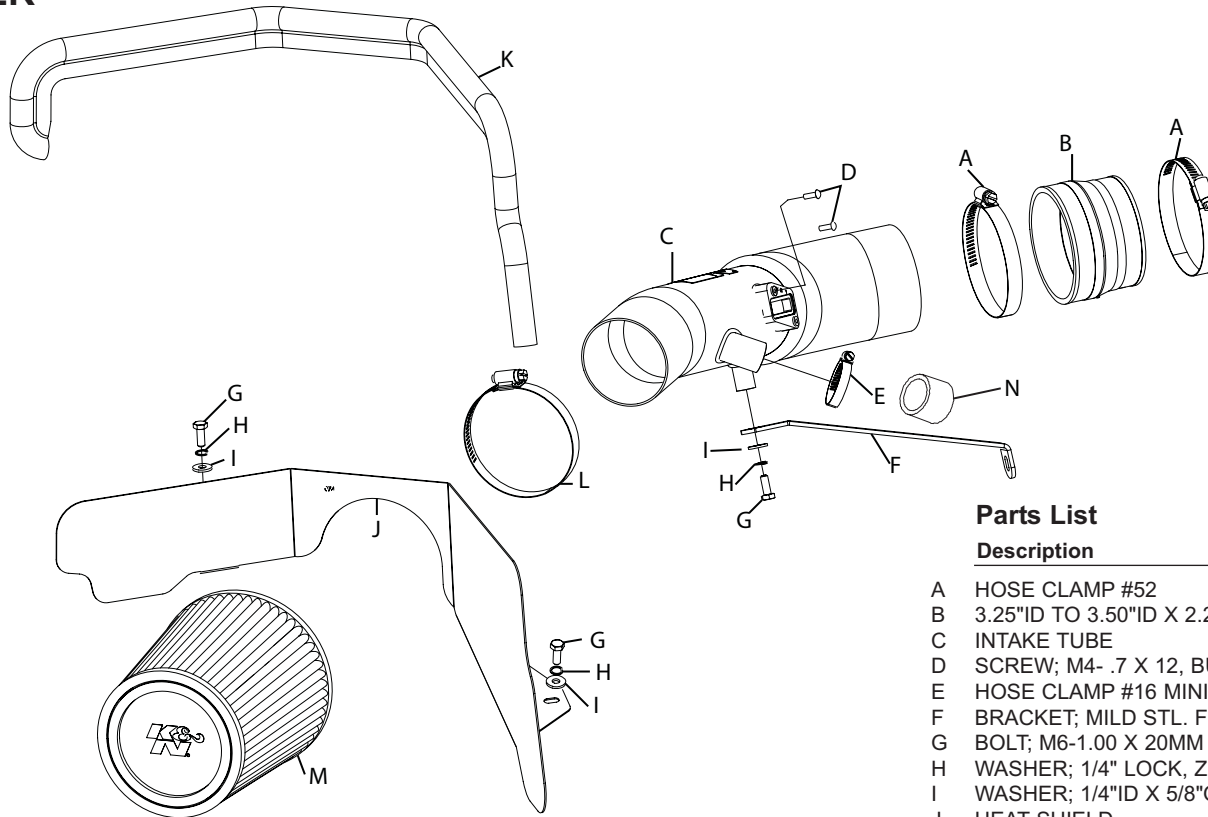
2006-08 ASCENDER

L6-4.2L

NOTE: EO# D-269-34  
APPLIES ONLY TO 2006  
MODELS

### TOOLS NEEDED:

Flat blade screwdriver  
Ratchet  
8mm socket  
10mm socket  
13mm socket



### Parts List

Description	Qty.	P/N
A HOSE CLAMP #52	2	08610
B 3.25"ID TO 3.50"ID X 2.25"L, TPRD, BLK	1	084091
C INTAKE TUBE	1	27188
D SCREW; M4- .7 X 12, BUTTON HEAD SS	2	07726
E HOSE CLAMP #16 MINI	1	08427
F BRACKET; MILD STL. FB/PC	1	26632
G BOLT; M6-1.00 X 20MM ALLEN HD.	3	07852
H WASHER; 1/4" LOCK, ZN	3	08198
I WASHER; 1/4"ID X 5/8"OD - SAE	3	08275
J HEAT SHIELD	1	07468
K EDGE TRIM (32")	1	102493
L HOSE CLAMP #48	1	08601
M AIR FILTER	1	RU-4730
N CAPPLUG; 15/16" ID, 3/4" L, BLK, EPDM	1	08246

**NOTE: FAILURE TO FOLLOW INSTALLATION INSTRUCTIONS AND NOT USING THE PROVIDED HARDWARE MAY DAMAGE THE INTAKE TUBE, THROTTLE BODY AND ENGINE.**

### TO START:

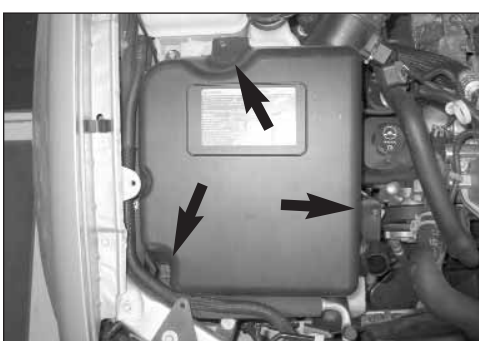
1. Turn the ignition OFF and disconnect the vehicle's negative battery cable.



2. Disconnect the mass air sensor electrical connection as shown.



3. Depress the locking tabs and disconnect the air injection hose from the upper air box housing as shown.



4. Loosen the three screws which secure the upper air box housing.



5. Remove the upper air box housing from the vehicle as shown.



6. Remove the fresh air supply duct from the lower air box housing as shown.



7. Loosen the hose clamp which secures the intake tube to the intake plenum and then remove the complete intake system as shown.

**NOTE: K&N recommends that customers do not discard factory air intake.**



8. Remove the two screws which secure the mass air sensor. Then remove the mass air sensor as shown.



9. Install the provided edge trim onto the heat shield as shown.



10. Install the heat shield onto the coolant reservoir with the hardware provided.



11. Remove the engine ground strap bolt shown.

**NOTE: This bolt will be reused.**



12. Install the tube mounting bracket (26632) onto the engine at the ground cable location and secure with the bolt removed in step #11.



13. Install the provided silicone hose (084091) to the throttle body and secure it with the provided hose clamp.



14. Install the mass air sensor into the K&N intake tube and secure with the provided hardware.



15. Install the K&N intake tube assembly into the silicone hose at the throttle body and align it with the mounting bracket installed in step #12. Then secure the tube with the provided hose clamp and hardware.



16. Mark the air injection hose at the base of the top 90deg bend as shown.



17. Cut the air injection hose at the location marked in step #16. Then install the hose onto the K&N intake tube and secure with the provided hose clamp.

**Note: Vehicles that are not equipped with Air Injection; use the supplied plug (#08246) to cap the tube vent.**



18. Install the K&N air filter onto the K&N intake tube and secure with the provided hose clamp.



19. Reconnect the negative battery cable and double check to make sure everything is tightened and properly positioned before starting the vehicle.

20. The C.A.R.B. exemption sticker, (attached), must be visible under the hood, so that an emissions inspector can see it when the vehicle is required to be tested for emissions. California requires testing every two years, other states may vary.

21. It will be necessary for all Performance Intake Kits to be checked periodically for realignment, clearance and tightening of all connections. Failure to follow the above instructions or proper maintenance may void warranty.

#### ROAD TESTING:

1. Start the engine with the transmission in neutral or park, and the parking brake engaged. Listen for air leaks or odd noises. For air leaks secure hoses and connections. For odd noises, find cause and repair before proceeding. This kit will function identically to the factory system except for being louder and much more responsive.

2. Test drive the vehicle. Listen for odd noises or rattles and fix as necessary.

3. If road test is fine, you can now enjoy the added power and performance from your kit.

4. K&N suggests checking the air filter element periodically for excessive dirt build-up. When the element becomes covered in dirt (or once a year), service it according to the instructions on the Recharger service kit, part number 99-5000 or 99-5050.

**STREET LEGAL IN MOST STATES**

**NOT LEGAL FOR USE IN CA & OTHER STATES  
ADOPTING CA EMISSIONS STANDARDS**

**See our catalog or [knfilters.com](http://knfilters.com) for CARB status on each part for a specific vehicle**

\* FREE K&N DECAL To register your warranty, please see us online at [knfilters.com/register](http://knfilters.com/register). FREE K&N DECAL \*