



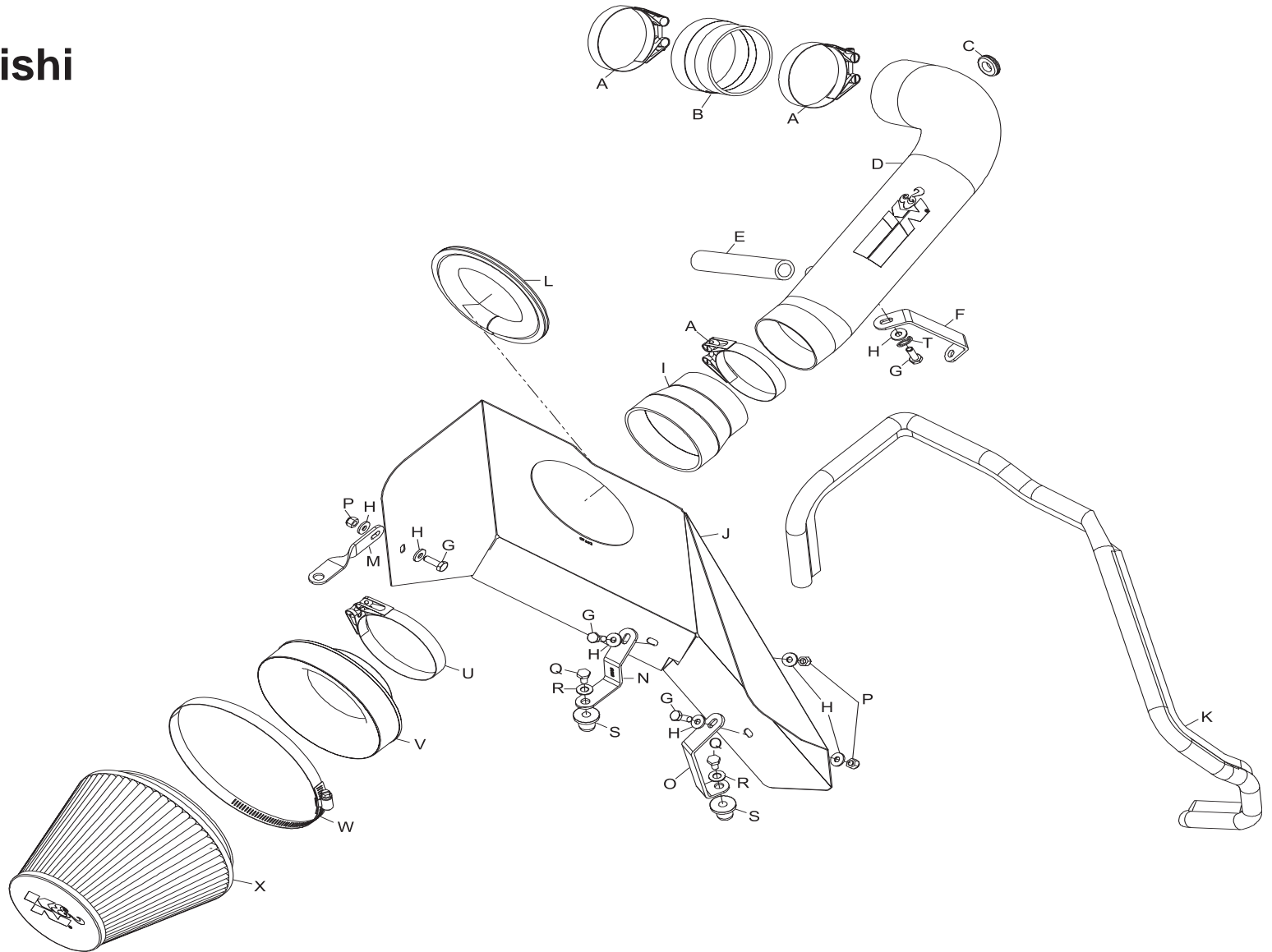
# INSTALLATION INSTRUCTIONS

## 77-1547 Dodge / Mitsubishi 2005-06 Dakota 2006 Raider V6-3.7L

NOTE: This kit was not designed to fit vehicles with a body lift.

### TOOLS NEEDED:

- Flat Blade Screwdriver
- Ratchet
- Extension
- 10mm Socket
- 13mm Socket
- 10mm Wrench
- 1/2" Socket
- 2.5mm Allen
- 9/64" Allen Wrench



### PARTS LIST:

Description	Qty.	Part #	Description	Qty.	Part #	Description	Qty.	Part #
A Hose Clamp #48	3	08601	J Heat Shield	1	07662	S Insert; 5/16-18x.600ODx.730 L	2	088002
B Hose; 3"ID-3-1/8"IDx2"l TPRD	1	084031	K Edge Trim 44"	1	102486	T Washer; 1/4" Lock ZN	1	08198
C Grommet; 1"OD, 1/2"ID, 1/4" THK	1	08167	L Edge Trim 17"	1	102469	U Hose Clamp # 52	1	08610
D Intake Tube	1	27428	M Bracket; Twist	1	070702	V Adapter #380	1	21512
E Hose; 5/8"ID x 5"l,	1	08538	N Bracket	1	010120	W Hose Clamp #104	1	08697
F Small "C" Bracket	1	010119	O Large "C" Bracket	1	010118	X Air Filter	1	RF-1048
G Bolt; m6-1.00 x 16mm Hex HD.	4	07703	P Nut; 6mm Nylock, Hexhead	3	07553			
H Washer; 1/4"ID x 5/8"od - SAE	7	08275	Q Bolt; 5/16-1"L, Hex Head	2	07777			
I Hose; 3" to 3-1/2" x 3"l	1	084055	R Washer; 5/16"ID x 5/8"OD, Flat	2	08276			

NOTE: FAILURE TO FOLLOW INSTALLATION INSTRUCTIONS AND NOT USING THE PROVIDED HARDWARE MAY DAMAGE THE INTAKE TUBE, THROTTLE BODY AND ENGINE.

### TO START:

1. Turn off the ignition and disconnect the negative battery cable.



2. Loosen the hose clamp at the intake plenum and the air box mounting nut, and then disconnect the crank case vent hose from the "tee" fitting.



3. Disconnect the stock intake tube from the intake plenum and lift to remove the air box assembly from the vehicle as shown.

NOTE: K&N® recommends that customers do not discard factory air intake.



4. Depress the locking tab on the air temperature sensor electrical connection and then pull to disconnect the sensor electrical connection.



5. Lift to dislodge the intake plenum from its mounting grommets and remove the intake plenum from the vehicle as shown.



6. Pull the two-air box mounting grommets shown from the inner fender.



7. Install the provided edge trim onto the heat shield as shown.  
NOTE: Some trimming of the edge trim may be necessary.



8. Install the twist bracket (070702) onto the heat shield with the provided hardware as shown.



9. Install the "Z" bracket (010120) onto the heat shield with the provided hardware as shown.



10. Install the "C" bracket (010118) onto the heat shield with the provided hardware as shown.



11. Install the provided edge trim onto the heat shield as shown.  
**NOTE: Some trimming of the edge trim may be necessary.**



12. Install the two threaded inserts into the air box mounting grommet locations as shown.



13. Install the heat shield assembly and secure with the provided hardware and the factory air box mounting nut.  
**NOTE: Be sure to remove the factory spacer on the air box mounting stud before installing the heat shield assembly.**



14. Remove the rear, lower A/C compressor mounting bolt shown.



15. Install the tube mounting bracket (010119) onto the A/C compressor using the bolt removed in step #14 as shown.



16. Install the provided silicone hose (084031) onto the throttle body and secure with the provided hose clamp as shown.



17. Twist the air temperature sensor counter clockwise and remove it from the stock intake plenum.  
**NOTE: Take care, as the air temperature sensor is very fragile.**



18. Install the provided grommet into the K&N<sup>®</sup> intake tube as shown.



19. Remove the O-ring from the air temp. sensor as shown.



20. Install the sensor into the grommet installed in step #18.  
**NOTE: Take care installing the air temperature sensor, as it is very fragile.**



21. Install the K&N<sup>®</sup> intake tube into the throttle body hose and position so the mounting bracket aligns with the tube mounting stand off and then secure with the provided hardware.



22. Reconnect the air temperature sensor electrical connection as shown.



23. Install the provided crank case vent hose onto the factory "TEE" fitting and then onto the K&N<sup>®</sup> intake tube as shown.



24. Install the filter adapter into the air filter as shown and secure with the provided hose clamp.



25. Install the silicone hose (084055) onto the air filter adapter as shown and secure with the provided hose clamp as shown.



26. Install the air filter assembly onto the K&N<sup>®</sup> intake tube and secure with the provided hose clamp as shown.



27. Reconnect the vehicle's negative battery cable. Double check to make sure everything is tight and properly positioned before starting the vehicle.

28. The C.A.R.B. exemption sticker, (attached), must be visible under the hood so that an emissions inspector can see it when the vehicle is required to be tested for emissions. California requires testing every two years, other states may vary.

29. It will be necessary for all K&N® high flow intake systems to be checked periodically for realignment, clearance and tightening of all connections. Failure to follow the above instructions or proper maintenance may void warranty.

#### ROAD TESTING:

1. Start the engine with the transmission in neutral or park, and the parking brake engaged. Listen for air leaks or odd noises. For air leaks secure hoses and connections. For odd noises, find cause and repair before proceeding. This kit will function identically to the factory system except for being louder and much more responsive.

2. Test drive the vehicle. Listen for odd noises or rattles and fix as necessary.

3. If road test is fine, you can now enjoy the added power and performance from your kit.

4. K&N Engineering, Inc., suggests checking the air filter element periodically for excessive dirt build-up. When the element becomes covered in dirt (or once a year), service it according to the instructions on the Recharger® service kit, part number 99-5050 or 99-5000.

**STREET LEGAL IN MOST STATES**

**NOT LEGAL FOR USE IN CA & OTHER STATES  
ADOPTING CA EMISSIONS STANDARDS**

**See our catalog or [knfilters.com](http://knfilters.com) for CARB status on each part for a specific vehicle**

\* FREE K&N® decal To register your warranty, please see us online at [knfilters.com/register](http://knfilters.com/register). FREE K&N® decal \*