

**Warning:** Please follow these installation instructions carefully. The K&N Drycharger included in this kit must be installed on the K&N air filter when used with a K&N Typhoon Cold Air Intake System. The K&N Typhoon Intake System is a performance product that can be used safely during mild weather conditions. During hard and inclement weather conditions, you must convert your Cold Air Intake System into your vehicle to the stock OEM airbox and intake tract configuration.

## INSTALLATION INSTRUCTIONS

### 69-7503

#### PEUGEOT

206 RC/206 GTi 180

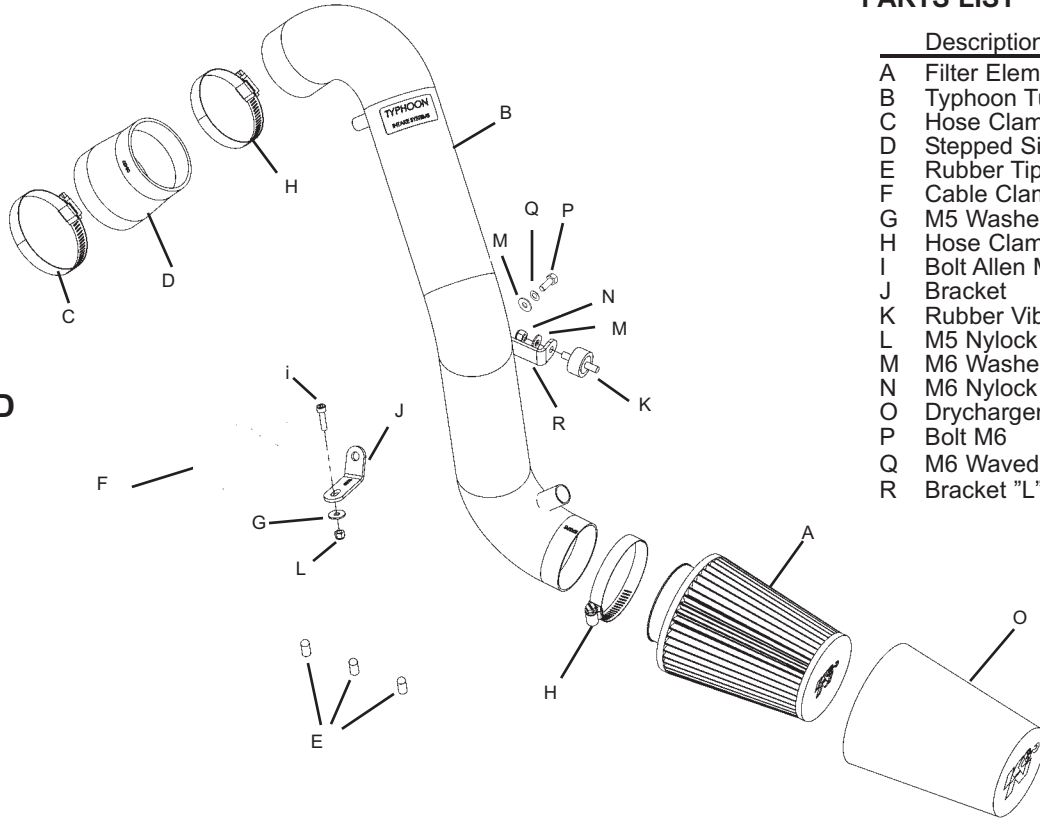
2.0L 16v, 180 bhp

2003-2006

**NOTE: FAILURE TO FOLLOW INSTALLATION INSTRUCTIONS AND NOT USING THE PROVIDED HARDWARE MAY DAMAGE THE INTAKE TUBE, THROTTLE BODY AND ENGINE.**

#### TO START:

1. Turn the ignition OFF and disconnect the vehicle's negative battery terminal.



#### PARTS LIST

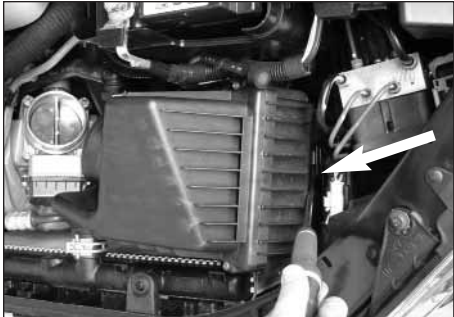
Description	Qty	P/N
A Filter Element	1	RC-9310
B Typhoon Tube	1	27375-1
C Hose Clamp #48	1	08601
D Stepped Silicone Hose	1	08096
E Rubber Tip	3	08282
F Cable Clamp	1	16705
G M5 Washer	1	08212
H Hose Clamp #44	2	08577
I Bolt Allen M5	1	08320
J Bracket	1	06469
K Rubber Vibration Stud	1	07027
L M5 Nylock Nut	1	07507
M M6 Washer	2	08269
N M6 Nylock Nut	1	07512
O Drycharger Element	1	RC9310DK
P Bolt M6	1	07703
Q M6 Waved Washer	1	08277
R Bracket "L"	1	070812

#### Tools Needed:

- 8 mm Spanner
- 10 mm Spanner
- Side-cutting pliers
- Car Jack
- Pair of Axle Stands
- Torx 20 screw driver
- 10 mm Socket wrench
- 11 mm Socket wrench
- 17 mm Wheel brace
- 7mm Socket spanner
- Flat blade screwdriver



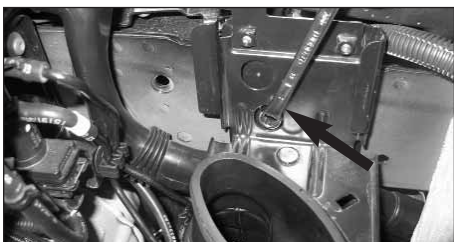
2. Remove the breather hose from the intake tube as shown. Release the 2 hose clamps and remove the intake tube from between the air box and the throttle body.



3. Unclip the air box from the air box support bracket as shown.



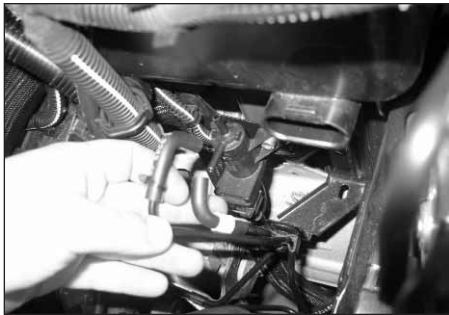
4. Carefully remove the complete air box assembly from the vehicle.



5. Undo the indicated bolt, then, remove the airbox mounting bracket from the vehicle.



6. Remove the battery air breather tube from the vehicle.



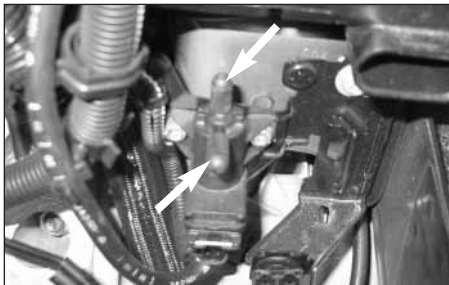
7. Remove the two vacuum hoses from the electronic vacuum switch as shown.



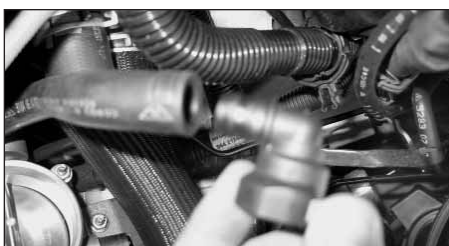
8. Remove the vacuum connector from the intake manifold. (This is the gray one.)



9. Remove the small vacuum hose and fit a rubber tip supplied onto the connector as shown. Re-install the connector to the intake manifold.



10. Fit two rubber tips supplied onto the electronic vacuum switch from step 7 as shown.



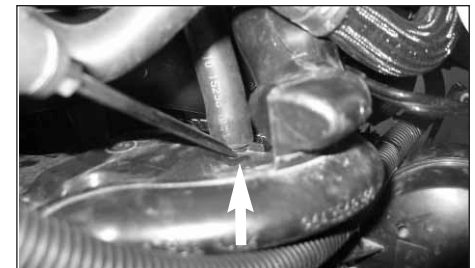
11. Remove the elbow connector from the breather hose from step 2.



12. Taking the necessary safety precautions raise the front of the vehicle and support it with axle stands. Now remove the wheel and wheel arch liner from the vehicle as shown.



13. Unclip the intake snorkel from the resonator box.



14. Carefully unclip and remove the air pump hose from the resonator box as shown.



15. Remove the vacuum hose from the top of the air intake assembly and remove the complete air intake assembly from the vehicle.



16. Carefully remove the complete resonator box assembly from underneath the vehicle by pulling it backwards.

Continued on reverse side!