



INSTALLATION INSTRUCTIONS

63-1545

JEEP

2008-10 GRAND CHEROKEE

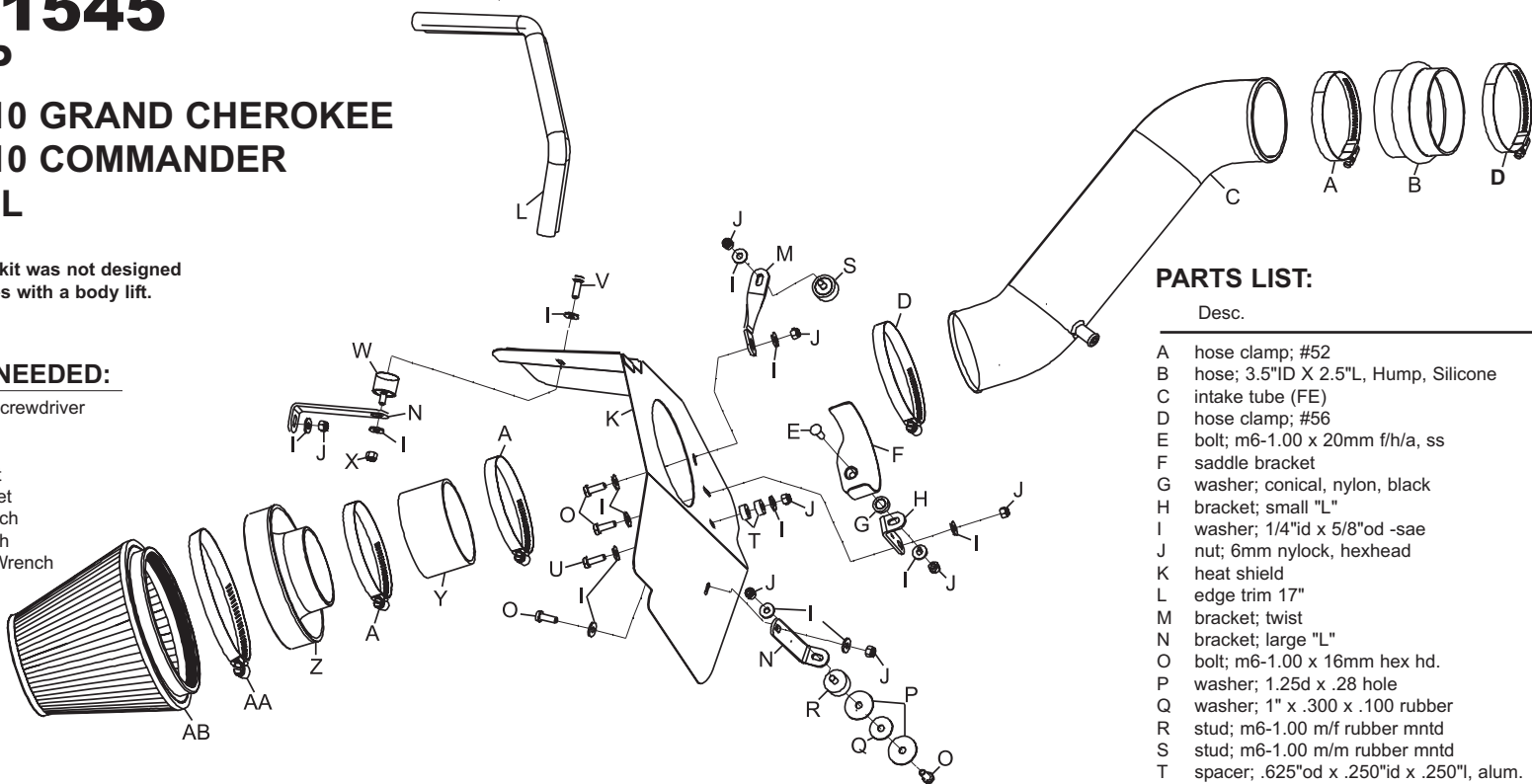
2006-10 COMMANDER

V6-3.7L

NOTE: This kit was not designed to fit vehicles with a body lift.

TOOLS NEEDED:

- Flat Blade Screwdriver
- Ratchet
- Extension
- 8mm Socket
- 10mm Socket
- 10mm Wrench
- 7/16" Wrench
- 4mm Allen Wrench



PARTS LIST:

Desc.	Qty.	Part #
A hose clamp; #52	3	08610
B hose; 3.5"ID X 2.5"L, Hump, Silicone	1	08699
C intake tube (FE)	1	087175
D hose clamp; #56	2	08620
E bolt; m6-1.00 x 20mm f/h/a, ss	1	08376
F saddle bracket	1	078855
G washer; conical, nylon, black	1	08180
H bracket; small "L"	1	07131
I washer; 1/4" id x 5/8" od -sae	14	08275
J nut; 6mm nylock, hexhead	8	07553
K heat shield	1	07321
L edge trim 17"	1	102469
M bracket; twist	1	010117
N bracket; large "L"	2	070952
O bolt; m6-1.00 x 16mm hex hd.	4	07703
P washer; 1.25d x .28 hole	2	08151
Q washer; 1" x .300 x .100 rubber	1	21685
R stud; m6-1.00 m/f rubber mntd	1	070228
S stud; m6-1.00 m/m rubber mntd	1	07027
T spacer; .625" od x .250" id x .250" l, alum.	2	06555
U bolt; m6-1.00 x 25mm hex hd.	1	07704
V bolt; 1/4-20 x 1/2 hexhead	1	08317
W stud; 1/4-20 m/f, 3/4 thk, rubber mntd	1	070226
X nut; 1/4-20, nylock zinc	1	07517
Y hose; 3.5"ID X 2"L, Black Silicone	1	08630
Z adapter; #380	1	21512
AA hose clamp #104	1	08697
AB air filter	1	RF-1048

NOTE: FAILURE TO FOLLOW INSTALLATION INSTRUCTIONS AND NOT USING THE PROVIDED HARDWARE MAY DAMAGE THE INTAKE TUBE, THROTTLE BODY AND ENGINE.

TO START:

1. Turn the ignition OFF and disconnect the vehicle's negative battery cable.



2. Loosen the hose clamp, which secures the stock intake tube to the intake plenum, and disconnect the crank case vent hose from the air box lid.



3. Unclip the upper air box retaining clips and remove the upper air box and intake tube assembly as shown.



4. On vehicles equipped, disconnect the vacuum canister hose shown.



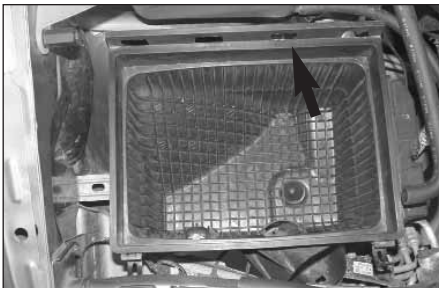
5. Using a small screwdriver, release the center holding pins in the six grill retaining clips shown.



6. Remove the six grill retaining clips from the grill, then tilt the grill forward and lift to remove from the vehicle.



7. Pull the fresh air duct forward to disconnect it from the air box and then remove it from the vehicle.



8. Remove the air box mounting bolt shown.



9. Lift the lower air box and remove it from the vehicle as shown.

NOTE: K&N® recommends that customers do not discard factory air intake.

NOTE: It may be necessary to loosen and move the windshield washer bottle to remove the lower air box.



10. Install the saddle clamp onto the "L" bracket (07131) with provided hardware as shown.



11. Install the provided edge trim onto the heat shield as shown.

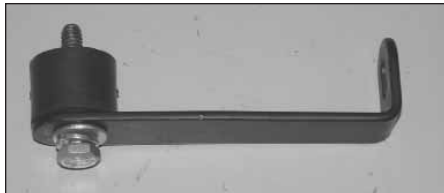
NOTE: Some trimming of the edge trim may be necessary.



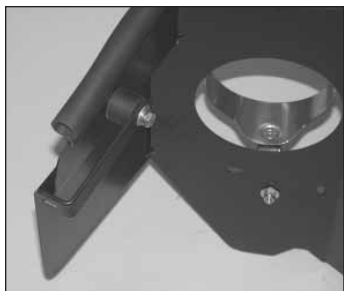
12. Install the saddle bracket assembly onto the heat shield with the provided hardware as shown.



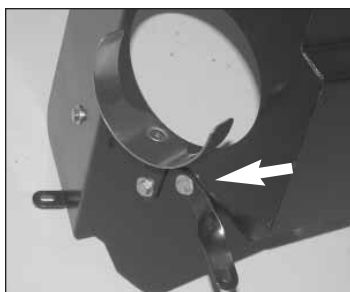
13. Install the "L" bracket (070952) onto the heat shield with provided hardware as shown. **NOTE: Mount this bracket on the inside of the heat shield with the "L" pointing to the outside.**



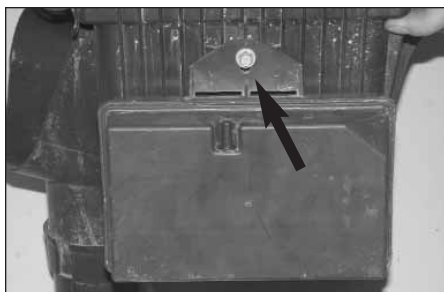
14. Install the 1/4"-20 male/female rubber mounted stud onto the "L" bracket (070952) with the provided hardware as shown.



15. Install the bracket/rubber mounted stud assembly onto the heat shield as shown using the provided hardware.



16. Install the twist bracket onto the heat shield as shown using the provided hardware.



17. On vehicles equipped, remove the bolt which secures the vacuum reservoir to the air box and then remove the reservoir from the air box.



18. On vehicles equipped with vacuum reservoir, using the provided spacer, install the vacuum reservoir onto the heat shield as shown.

NOTE: Due to vehicle manufacturing tolerances, 2 spacers may be required.



19. Remove the coolant reservoir-retaining nut and air box mounting grommet shown.



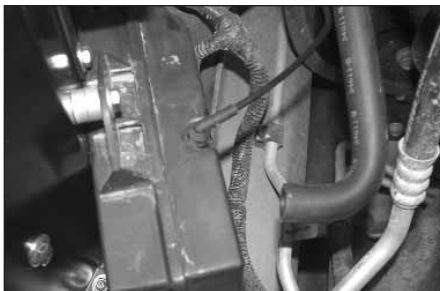
20. Using the two fender washers and one rubber washer, install the 6mm male/female rubber mounted stud onto the lower air box mount as shown.



21. Install the 6mm male/female rubber mounted stud onto the upper air box mount as shown.



22. Install the heat shield assembly into the vehicle and secure it to the mounting locations with the provided hardware.



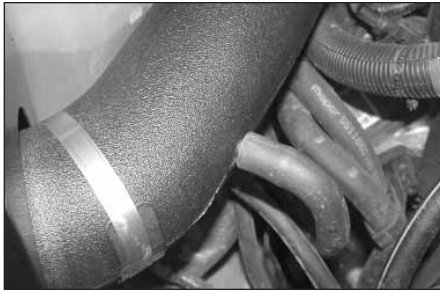
23. On vehicles equipped reconnect the vacuum reservoir vacuum line.



24. Install the silicone hose (08699) onto the intake plenum and secure with the provided hose clamp as shown.



25. Install the K&N® intake tube into the silicone hose at the throttle body and onto the saddle clamp, then secure with the provided hose clamps as shown.



26. Connect the crank case vent hose onto the K&N® intake tube as shown.

NOTE: Some trimming of the factory vent hose may be necessary.



27. Install the filter adapter into the air filter as shown, secure with the provided hose clamp.



28. Install the silicone (08630) onto the air filter assembly and secure with the provided hose clamp.



29. Install the air filter assembly onto the K&N® intake tube as shown and secure with the provided hose clamp.



30. Reinstall the grill assembly with the factory retaining clips removed in step #5



31. Reconnect the vehicle's negative battery cable. Double check to make sure everything is tight and properly positioned before starting the vehicle.

32. It will be necessary for all Aircharger's to be checked periodically for realignment, clearance and tightening of all connections. Failure to follow the above instructions or proper maintenance may void warranty.

ROAD TESTING:

1. Start the engine with the transmission in neutral or park, and the parking brake engaged. Listen for air leaks or odd noises. For air leaks secure hoses and connections. For odd noises, find cause and repair before proceeding. This kit will function identically to the factory system except for being louder and much more responsive.

2. Test drive the vehicle. Listen for odd noises or rattles and fix as necessary.

3. If road test is fine, you can now enjoy the added power and performance from your kit.

4. K&N Engineering, Inc., suggests checking the Air filter element periodically for excessive dirt build-up. When the element becomes covered in dirt (or once a year), service it according to the instructions on the Recharger® service kit, part number 99-5050 or 99-5000.