



FUEL INJECTION PERFORMANCE KIT

FIPK

GENERATION II™

INSTALLATION INSTRUCTIONS

57-2564

FORD / MERCURY

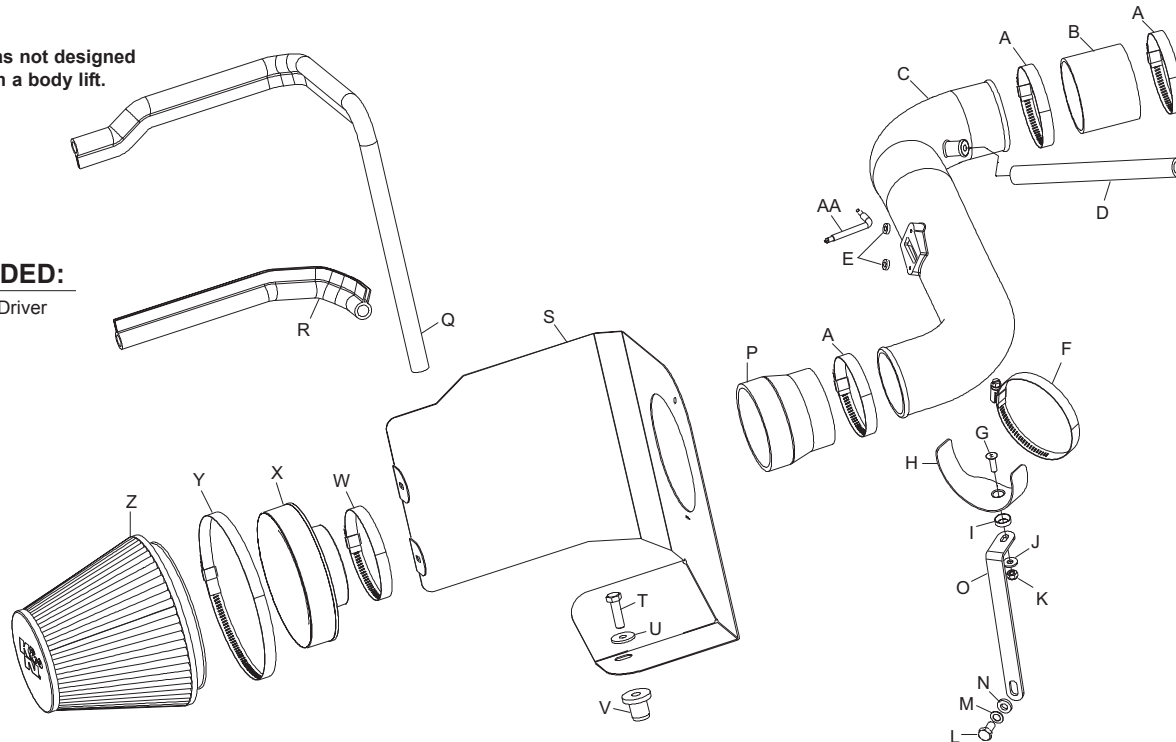
2004-05 EXPLORER / MOUNTAINEER

V8-4.6L

NOTE: This kit was not designed to fit vehicles with a body lift.

TOOLS NEEDED:

- Flat Blade Screw Driver
- Ratchet
- Extension
- 10mm Socket
- 9/16" Socket
- 10mm Wrench
- 13mm Wrench
- 4mm Allen



PARTS LIST:

Desc.	QTY.	Part #
A	3	08601
B	1	08192
C	1	087159
D	1	08535
E	2	06503
F	1	08577
G	1	08376
H	1	078855
I	1	08180
J	1	08275
K	1	07553
L	1	07844
M	1	08239
N	1	08276
O	1	010095
P	1	08724
Q	1	102471
R	1	102474
S	1	074034
T	1	07779
U	1	08134
V	1	08163
W	1	08620
X	1	21512
Y	1	08697
Z	1	RF-1048
AA	1	69801

TO START:

1. Turn the ignition OFF and disconnect the vehicle's negative battery cable.



2. Depress the red locking tab and then disconnect the mass air sensor electrical connection.



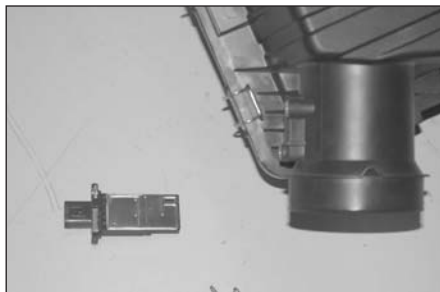
3. Release the green locking tab and then disconnect the crank case vent from the stock intake tube.



4. Loosen the hose clamps at the throttle body and the air box, and then remove the stock intake tube as shown.



5. Using a screwdriver, pry up the bottom of the air cleaner to release the air cleaner from the mounting grommets, and then remove the air cleaner assembly as shown.



6. Using the "TORX" L key provided, remove the two screws, which retain the mass air sensor to the air box then remove the sensor as shown.



7. Assemble the tube mounting bracket (010095) and saddle clamp as shown.

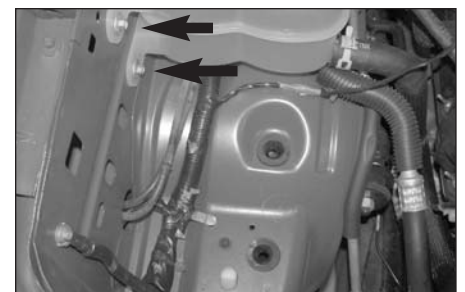


8. Using the 8mm bolt washers supplied, attach the tube mounting bracket assembly to the front of the engine at the threaded boss above the belt tensioner as shown.

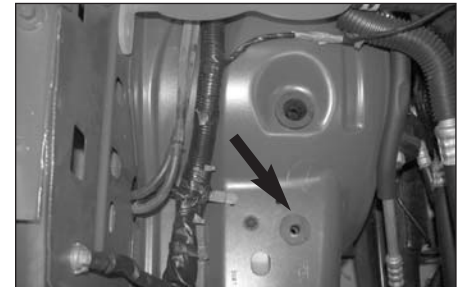


9. Install the edge trim seal onto the heat shield as shown.

NOTE: Some trimming of the edge trim may be necessary.



10. Remove the two-coolant bottle mounting bolts and the forward air box retaining grommet shown.



11. Install the inserted nut into the forward air box mounting grommet hole vacated in step #10 as shown.



12. Install the heat shield as shown and attach to the inner fender with the factory coolant bottle mounting bolts and the 3/8" bolt and washer provided.



13. Install the silicone hose (08192) onto the throttle body and secure with the provided hose clamp as shown.



14. Install the mass air sensor into the K&N intake tube and secure with the factory screws and spacers provided.



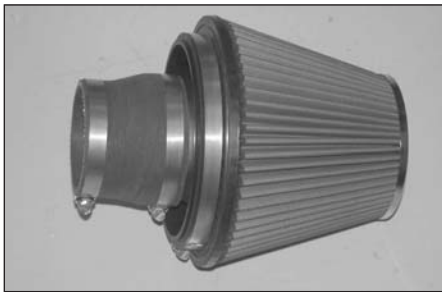
15. Install the K&N intake into the silicone hose at the throttle body and onto the saddle clamp, then secure with the provided hose clamp.



16. Cut the factory crank case vent tube one inch from the end, then attach the supplied silicone vent hose to the K&N intake tube and factory vent tube as shown.



17. Install the filter adapter into filtercharger as shown and secure with the provided hose clamp.

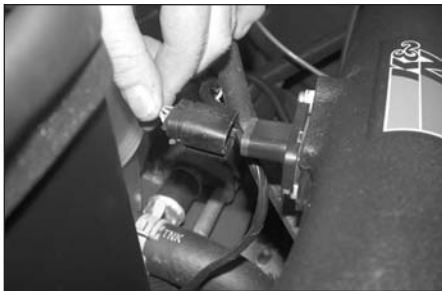


18. Install the silicone hose (08724) onto the filtercharger assembly and secure with the provided hose clamp as shown.



19. Install the filtercharger assembly onto the K&N intake tube and secure with the provided hose clamp as shown.

NOTE: Be sure to check to proper clearance around the filtercharger after installation.



20. Reconnect the mass air sensor electrical connection.



21. Reconnect the vehicle's negative battery cable. Double check to make sure everything is tight and properly positioned before starting the vehicle.

22. The C.A.R.B. exemption sticker, (attached), must be visible under the hood so that an emissions inspector can see it when the vehicle is required to be tested for emissions. California requires testing every two years, other states may vary

23. It will be necessary for all FIPK's to be checked periodically for realignment, clearance and tightening of all connections. Failure to follow the above instructions or proper maintenance may void warranty.

ROAD TESTING:

1. Start the engine with the transmission in neutral or park, and the parking brake engaged. Listen for air leaks or odd noises. For air leaks secure hoses and connections. For odd noises, find cause and repair before proceeding. This kit will function identically to the factory system except for being louder and much more responsive.

2. Test drive the vehicle. Listen for odd noises or rattles and fix as necessary.

3. If road test is fine, you can now enjoy the added power and performance from your kit.

4. K&N suggests checking the Filtercharger element periodically for excessive dirt build-up. When the element becomes covered in dirt (or once a year), service it according to the instructions on the Recharger service kit, part number 99-5050 or 99-5000.