



FUEL INJECTION PERFORMANCE KIT

FIPK
GENERATION II™

INSTALLATION INSTRUCTIONS

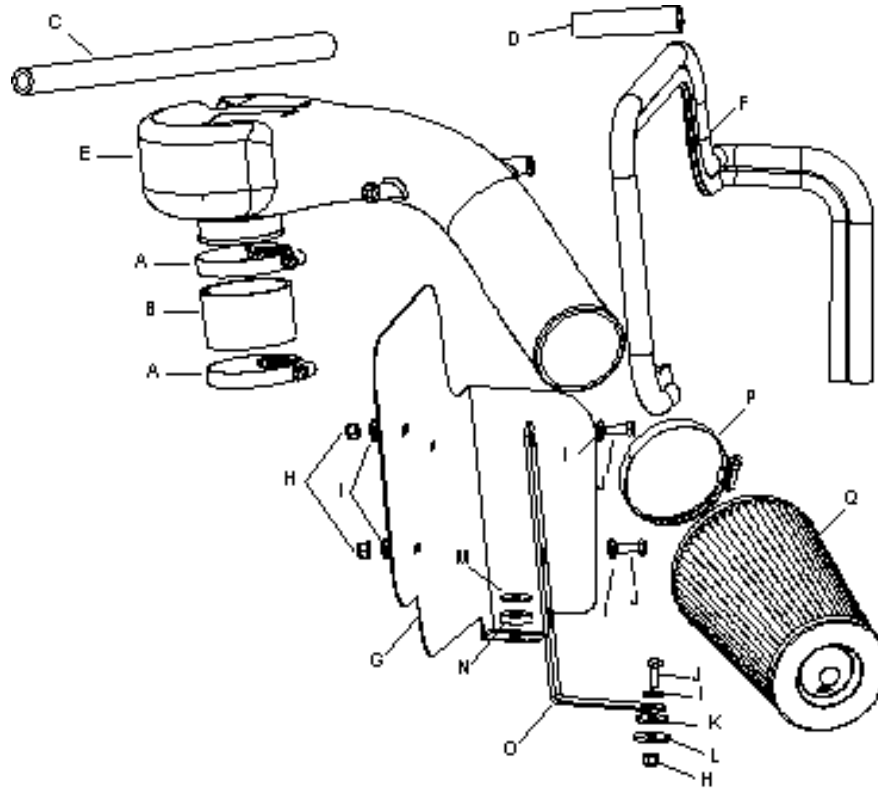
57-1519

Jeep
1991-95 Cherokee
L6-4.0L

NOTE: This kit was not designed to fit vehicles with a body lift.

TOOLS NEEDED:

Flat blade screwdriver
13mm wrench
7/16" wrench



PARTS LIST:

Description	Qty.	P/N
A Hose clamp #40	2	08554
B Silicone hose	1	08108
C Silicone hose 1/2 x 15-3/4"L	1	08414
D Silicone hose 1/2 x 3-1/2"L	1	087028
E Intake tube	1	087027
F Edge trim 39"L	1	102496
G Heat shield	1	07452
H Nut, 1/4-20 nylock	3	07517
I Washer, 1/4"	5	08275
J Bolt, 1/4-20 hex head	3	08386
K Washer, rubber	1	21685
L Washer, 1"od x 1/4" id	1	08160
M Washer, 1"od x .300" id	1	08130
N Washer, nylon	1	08281
O Bracket	1	070011
P Hose clamp #48	1	08061
Q Filtercharger	1	RC-4690

NOTE: FAILURE TO FOLLOW INSTALLATION INSTRUCTIONS AND NOT USING THE PROVIDED HARDWARE MAY DAMAGE THE INTAKE TUBE, THROTTLE BODY AND ENGINE.

TO START:

1. Turn the ignition OFF and disconnect the vehicle's negative battery cable.



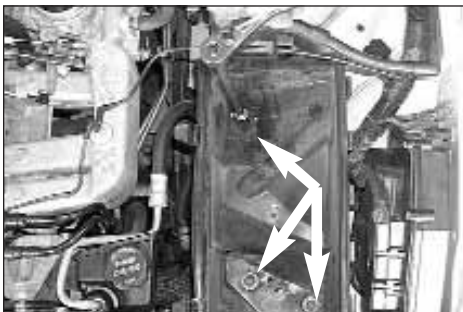
2. Remove the crankcase vent line from the valve cover.



3. Remove the EVAP canister vent line from the air cleaner lid.



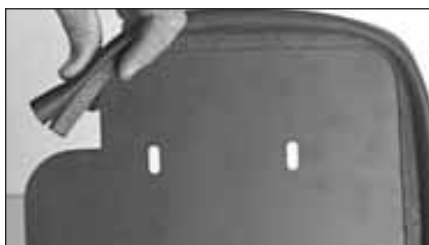
4. Loosen the hose clamp at the throttle body and unclamp the airbox lid then remove the upper intake assembly as shown.



5. Loosen and remove the two bolts and one hex nut that secure the lower air cleaner assembly.



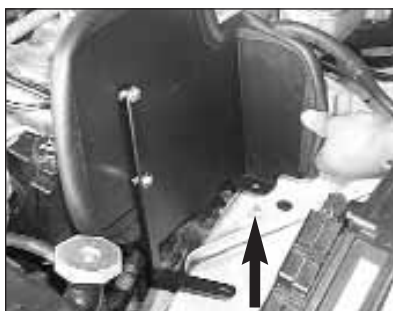
6. Remove the lower air cleaner assembly as shown



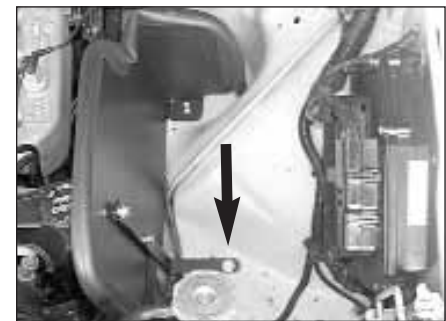
7. Install the trim seal onto the heat shield. Trim excess if needed.



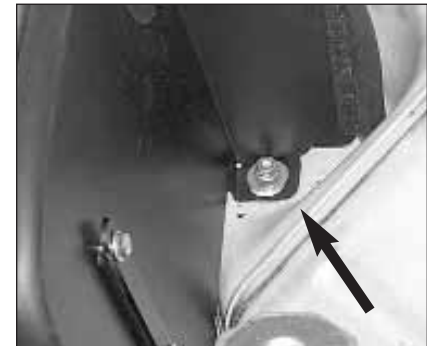
8. Using the provided hardware, secure the "L" bracket to the heat shield as shown.



9. Install the heat shield assembly into the vehicle lining up the factory stud with the tab on the heat shield.



10. Using the provided hardware, secure the "L" bracket to the inner fender as shown.



11. Using the provided washers and the hex nut removed in step 5, secure the heat shield assembly to the existing stud as shown.



12. Install the silicone hose and the hose clamps onto the throttle body as shown.



13. Install the K&N intake tube onto the throttle body and tighten the hose clamp.



14. Install the provided silicone hose onto the crankcase vent, then install the other end onto the K&N intake tube.



15. Install the provided silicone hose onto the EVAP canister vent line then secure the other end onto the K&N intake tube.



16. Install the K&N Filtercharger onto the K&N intake tube as shown.

17. Reconnect the vehicle's negative battery cable. Double check to make sure everything is tight and properly positioned before starting the vehicle.

18. The C.A.R.B. exemption sticker, (attached), must be visible under the hood, so that an emissions inspector can see it when the vehicle is required to be tested for emissions. California requires testing every two years, other states may vary.

19. It will be necessary for all FIPK's to be checked periodically for realignment, clearance and tightening of all connections. Failure to follow the above instructions or proper maintenance may void warranty.

ROAD TESTING:

1. Start the engine with the transmission in neutral or park, and the parking brake engaged. Listen for air leaks or odd noises. For air leaks secure hoses and connections. For odd noises, find cause and repair before proceeding. This kit will function identically to the factory system except for being louder and much more responsive.
2. Test drive the vehicle. Listen for odd noises or rattles and fix as necessary.
3. If road test is fine, you can now enjoy the added power and performance from your kit.
4. K&N suggests checking the Filtercharger element periodically for excessive dirt build-up. When the element becomes covered in dirt (or once a year), service it according to the instructions on the Recharger service kit, part number 99-5050 or 99-5000.

50-STATE STREET LEGAL
K&N CARB EXEMPT K&N

FREE K&N DECAL To register your warranty, please see us online at knfilter.com/register. FREE K&N DECAL

